

*Is it time to look differently  
at infection prevention  
and treatment?*

INCIDENCES OF  
DEEP STERNAL WOUND  
INFECTIONS UP TO

↑ **2.11%**

## **NICE guidelines on Surgical site infections**

*Surgical site infections have been shown to compose up to 20% of all healthcare-associated infections with at least 5% of patients undergoing a surgical procedure, subsequently developing a surgical site infection<sup>2</sup>.*

- ▶ Recent evidence identified that the use of gentamicin implants before skin closure reduced the incidence of surgical site infections<sup>1</sup>.
- ▶ In particular, the evidence suggested that *gentamicin-collagen implants* reduced the incidence of surgical site infections in people at one month and two months after cardiac surgery<sup>1</sup>.

**7.5%**  
**MORTALITY RATE**  
FOR PATIENTS WITH A DEEP  
STERNAL WOUND INFECTION<sup>2</sup>

SIGNIFICANT IMPACT  
ON THE PATIENTS

**QUALITY OF LIFE**

**CONSIDERABLE COST**  
IMPACT ON THE NHS

**MAKING A CASE FOR  
GENTA-COLL® RESORB**



**References:**

1. Surgical site infections: prevention and treatment. NICE guideline [NG125], April 2019
2. Cardiothoracic Surgery. GIRFT Programme National Specialty Report by David Richens FRCS, GIRFT Clinical Lead for Cardiothoracic Surgery, March 2019



## GENTA-COLL® *resorb*

### High-quality collagen sponge with antibiotic protection

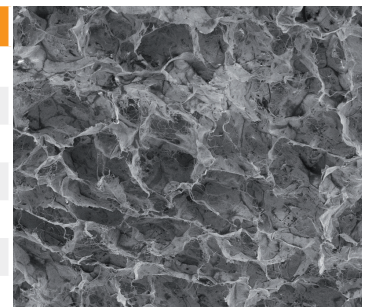
- ▶ **Hemostyptic**
- ▶ **Resorbable**
- ▶ **Malleable**
- ▶ **Carrier material for fibrin sealants**
- ▶ **Absorbent**
- ▶ **Structurally stable**

GENTA-COLL® *resorb* is a haemostatic collagen sponge that contains the aminoglycoside antibiotic gentamicin sulphate to protect the collagen sponge from microbial contamination.

- ▶ Collagen is completely resorbed eliminating secondary surgical interventions
- ▶ Native collagen fibrils activate coagulation like endogenous collagen
- ▶ The thrombocytes aggregate around the collagen fibres, triggering haemostasis
- ▶ After application, GENTA-COLL® *resorb* fills in the missing volume, forming a guide rail for the tissue reaction, promoting the migration and adhesion of actively dividing cells
- ▶ The loose filling of the defect with GENTA-COLL® *resorb* prevents the formation of a wound haematoma, whilst protecting the collagen sponge from bacterial infection.

### GENTA-COLL® *resorb*

SPONGE SIZE		PACK CONTENTS	REF
2.5 x 2.5cm	6.25cm <sup>2</sup>	1 sponge	GC125
2.5 x 2.5cm	6.25cm <sup>2</sup>	5 sponges	GC525
5 x 5cm	25cm <sup>2</sup>	1 sponge	GC15
5 x 5cm	25cm <sup>2</sup>	5 sponges	GC55
10 x 10cm	100cm <sup>2</sup>	1 sponge	GC110
10 x 10cm	100cm <sup>2</sup>	5 sponges	GC510
5 x 20cm	100cm <sup>2</sup>	1 sponge	GC1520



M0011 2019-06