

Avelle™

Negative Pressure Wound Therapy System

NPWT
POWERED BY

AQUACEL®



A FLEXIBLE NPWT SYSTEM

Maximise healing in surgical incisions

Avelle™ NPWT System - combining
AQUACEL® dressing technology
with the healing power of NPWT
for up to 30 days.



convatec
— forever caring —



Surgical Wound Complications

Despite advances in surgical techniques, intraoperative practice, wound dressings and an enhanced understanding of wound healing, surgical site infections (SSI) and other surgical wound complications (SWC) continue to be a challenge to clinicians and researchers across the globe.¹

An SWC is defined as a disruption to normal incisional wound healing following surgery² and poses a threat to outcomes across all surgical procedures.

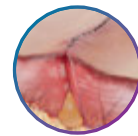
SWCs can include:¹



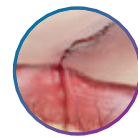
Infection



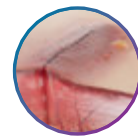
Haematoma



Seroma



Dehiscence



Blistering

The clinical and economic impacts

30 DAYS

SSIs CAN OCCUR UP TO 30 DAYS AFTER SURGERY⁵

18%

SSIS ACCOUNT FOR 18% OF ALL HEALTH CARE ACQUIRED INFECTIONS³

60%

UP TO 60% OF SSIs HAVE BEEN ESTIMATED TO BE PREVENTABLE⁵

UP TO **£6,626**

ADDITIONAL COSTS PER PATIENT ATTRIBUTABLE TO AN SSI⁵

POWERED BY



NPWT
POWERED BY

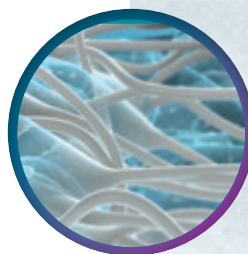
AQUACEL[®]



A responsive wound interface engineered for NPWT

ConvaTec has been helping millions of clinicians worldwide to improve patient outcomes, enabling patients to move on with their lives through AQUACEL[®] dressings powered by Hydrofiber[®]Technology.

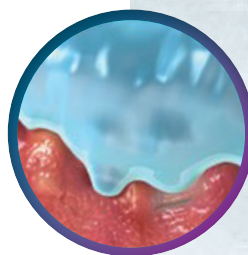
Combining the two proven wound therapies of AQUACEL[®] and NPWT into one system: Avelle[™] works in synergy, to provide your patients with the proven benefits of NPWT along with optimal moist wound healing delivered by Hydrofiber[®]Technology.



Responds

FAST GELLING FLUID MANAGEMENT

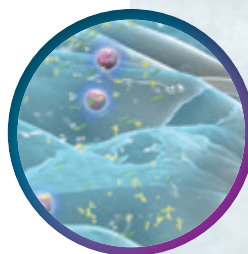
- *Fast gelling action with rapid fluid uptake.⁴*
- *Minimises lateral spread to peri-wound area.*



Micro-Contours

INTIMATE CONTACT, RAPID AND HIGH ABSORPTION

- *Swells into available spaces⁴⁻⁶*
- *Removes free fluid^{4,5}*
- *Contours to the wound surface⁶*
- *Fills dead space between the dressing and wound surface.⁶*



Locks In

RETENTIVE GEL FOR BACTERIAL SEQUESTRATION

- *Bacteria is entrapped within the gel & fully immobilised.^{4,7,8}*
- *Bacteria is separated from the wound surface and contained within the dressing.^{4,7,8}*

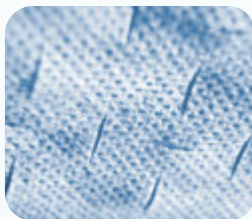
The interactive Avelle™ Dressing

The Hydrofiber® Technology interface and inner layers within the Avelle™ NPWT Dressing are engineered into an apertured design to allow negative pressure transmission through to the wound.

Bacterial sequestration facilitated by Hydrofiber® Technology

Hydrofiber® Technology - 8 Layers

Gels on contact with wound fluid and locks in bacteria within it.^{9,10} Fenestrations in the Hydrofiber® Technology layers are designed to promote vertical fluid movement throughout the dressing.



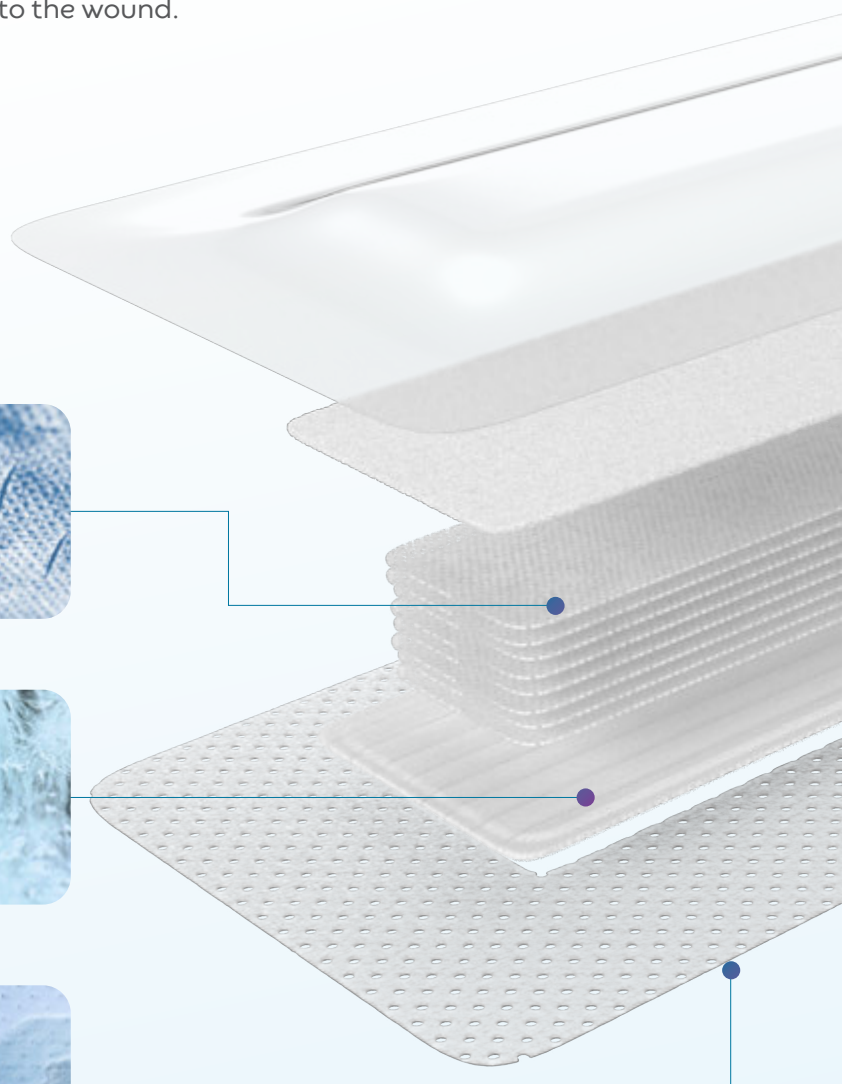
Hydrofiber® Technology Wound Contact Layer

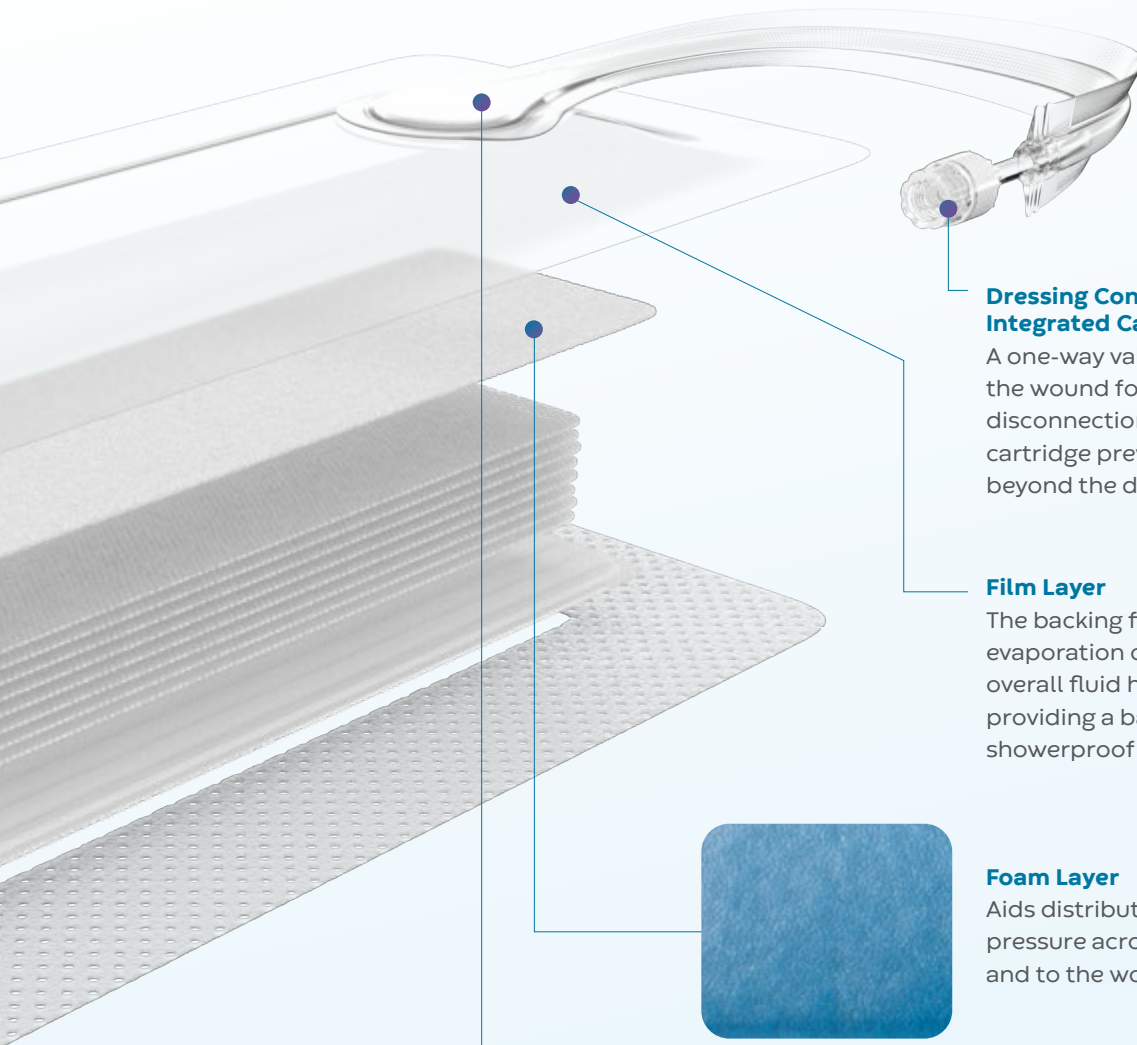
Apertured and stitch-bonded Hydrofiber® wound contact layer gels on contact with wound fluid⁹ and provides an open pathway for negative pressure transmission to the wound surface.



Perforated Silicone Adhesive Borders

Specifically designed to provide a secure adhesion while being gentle to the skin during removal.





Dressing Connector with Integrated Cartridge

A one-way valve maintains NPWT at the wound for up to one hour after disconnection from the pump.* Built in cartridge prevents exudate from passing beyond the dressing.

Film Layer

The backing film permits evaporation of exudate, aiding overall fluid handling while providing a bacterial, viral and showerproof barrier.⁹

Foam Layer

Aids distribution of negative pressure across the dressing and to the wound bed.

Soft Port

Designed to minimise the risk of pressure damage.

*As demonstrated in-vitro
Avelle™ NPWT dressings do not contain anti-microbial substances.



The Avelle™ NPWT Pump

Small, lightweight and single-use, the Avelle™ NPWT pump delivers 80mmHg[†] to the wound at the push of a button. With a lifetime of up to 30 days[‡], the Avelle™ NPWT Pump provides flexibility for short or extended therapy beyond 7-days and across different care settings to suit your patient's requirements.

Up to
30 DAY
Lifespan*

Ergonomic
&
Lightweight

80mmHg[†]
Continuous
Therapy

Simple
Indicator Lights
& No Audible
Alarms

Patient benefits of the Avelle™ NPWT System



Patients can disconnect the pump and shower with the dressing in place while maintaining NPWT for up to 1 hour.*



Patients can stay active while using the Avelle™ NPWT System to aid recovery and rehabilitation.



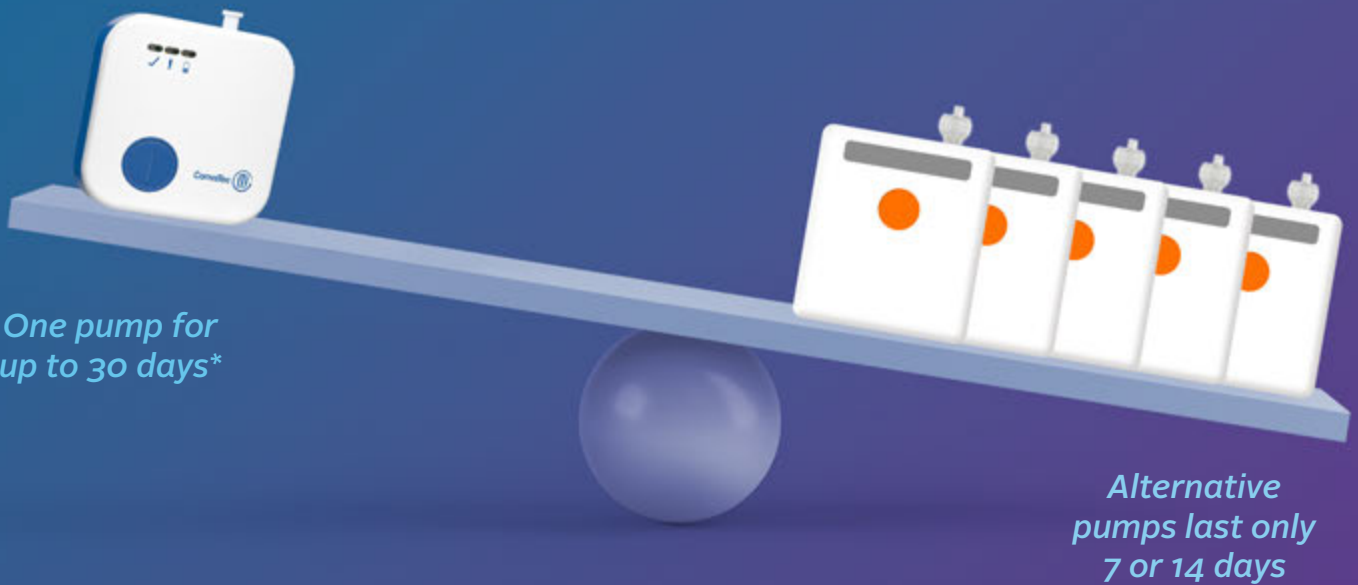
Fluids are managed by the Avelle™ NPWT dressing to prevent exudate from soiling clothing.

[†]80mmHg (±20 mmHg)

[‡]Battery change may be required during pump lifetime

*As demonstrated in-vitro

Cover the SSC risk period with a 30-day pump



Not all NPWT systems are equal. If you have multiple patients requiring longer term NPWT, 7 and 14 day pumps can be restrictive and costly. Avelle™ can help you reduce the complexity of product lines and pack configurations to help you manage your budget and stock more effectively.

Minimise
PUMP
Replacements



Separate
Dressing Packs for
FLEXIBLE SIZE
SELECTION



Contain
Therapy
COSTS



Efficient
STOCK
Management



Reduced Plastic
WASTE
& Environmental Impact





AQUACEL® Dressing Technology

Evidence in incision management

As a wound dressing interface AQUACEL® has a strong clinical heritage in supporting clinicians to improve surgical incision outcomes, supporting patients with a complication free recovery.

Clinical Evidence Summary

AQUACEL® Surgical, Ag Surgical & DuoDERM™ & AQUACEL® combination method

Orthopaedics Hip/Knee Arthroplasty	Cardiac Surgery	Breast Cancer Surgery	Colorectal	Cesarean Section	Thigh Lift
--	--------------------	--------------------------	------------	---------------------	------------

5 Prospective RCTs

5 Retrospective Studies

1 International Consensus

1 Prospective Clinical Audit

1 Comparative Evaluation

1 Systematic Review

1 Retrospective Study

1 Prospective RCT

2 Prospective RCTs

1 Surveillance Report

1 Case Control Study

20 CLINICAL PUBLICATIONS

supporting the reduction of surgical site infections & surgical site complications¹¹

Incision Management Avelle™ NPWT System in practice

Closed Incision - Total Hip Arthroplast 4-Day Treatment

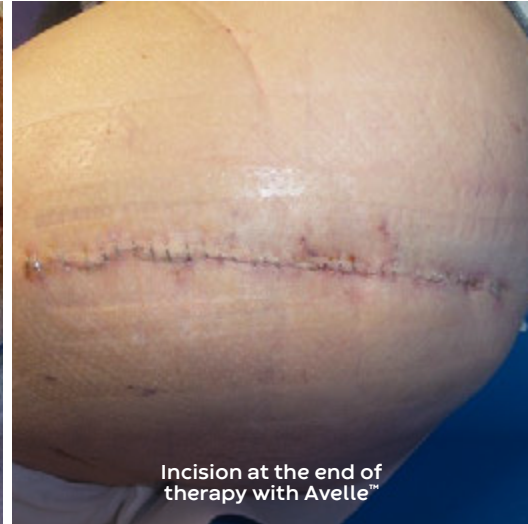
Dr Clare-Louise Sandell
Orthopaedic Nurse Specialist
Isle of Wight NHS Trust, UK

PATIENT

- 69 year old female.
- Admitted for total hip replacement.
- Comorbidities include chronic anaemia and type 2 diabetes.
- BMI over 35.



Wound upon presentation



Incision at the end of therapy with Avelle™

WOUND

- Initial surgery went well with no issues noted with the patient discharged home with AQUACEL® Surgical dressing and prescribed Dabigatran (VTE prophylaxis)
- 9 days later patient was experiencing pain and wound discharge.

MANAGEMENT & RESULTS

- Patient reviewed at the clinic on day 9 and the wound was bruised, indurated with mild exudate.
- The Avelle™ NPWT System applied on day 9 and Dabigatran stopped.
- The incision was reviewed 4 days later and was clean, dry with a noticeable improvement in bruising.

C-Section 9-Day Treatment

Alison Linton
Obstetric Consultant
Royal Lancaster Infirmary, UK

PATIENT

36-year-old female was admitted for an elective caesarean section at 38 weeks + 5 days. Patient had 7 previous vaginal births and 3 caesarean sections.



Avelle™ NPWT in situ



Incision at Day 5



Incision at Day 10 after removal of the Avelle™ NPWT System

WOUND

- Elective surgery was uncomplicated, and the wound was closed with nylon sutures. The Avelle™ NPWT System was applied and negative pressure therapy was achieved with ease.

MANAGEMENT & RESULTS

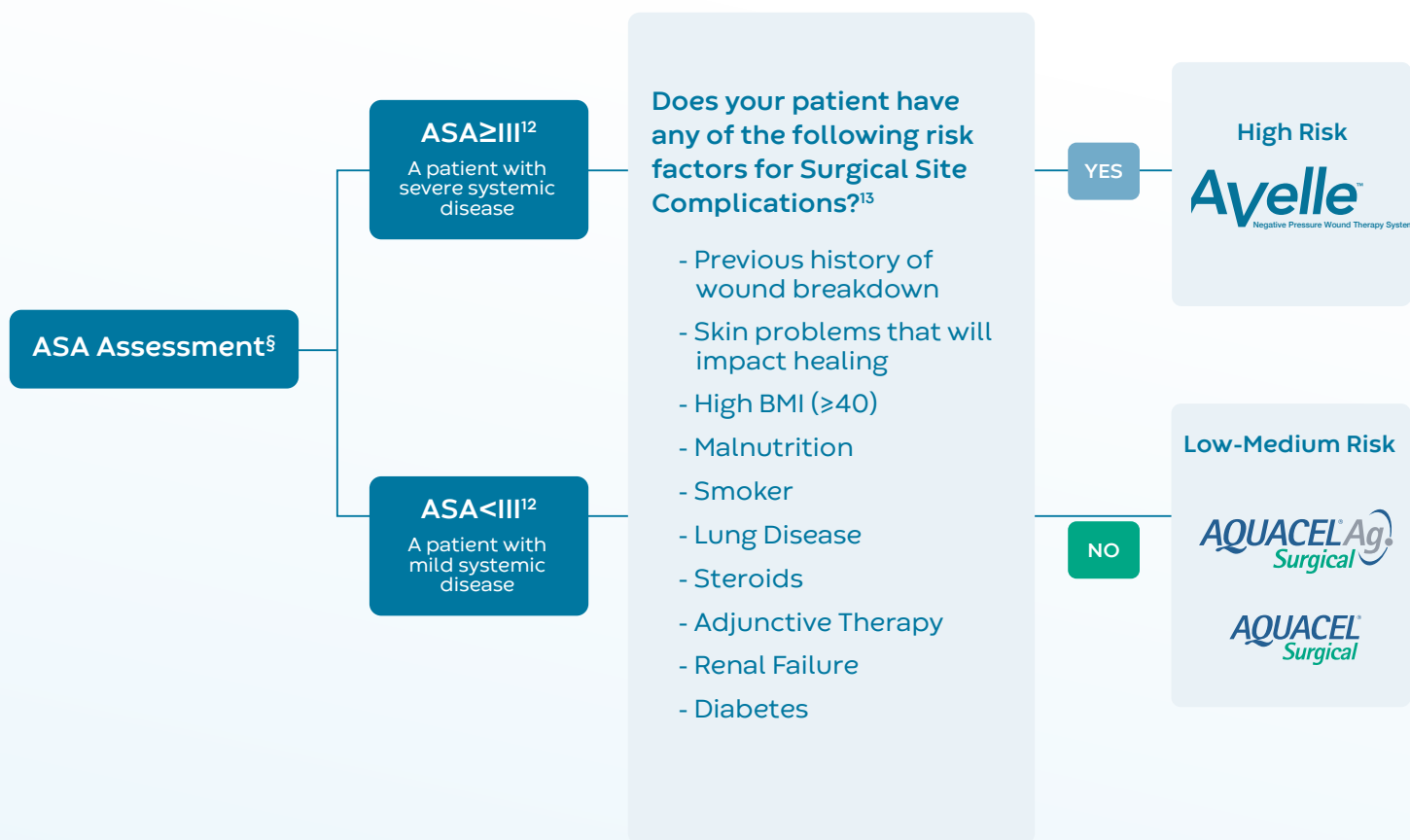
- On day 5, the clinical decision was made to remove all sutures and reapply the Avelle™ NPWT System to optimise wound progression and minimise the risk of post-operative wound complications.
- Patient was reviewed at home and Avelle™ NPWT was ceased on day 9 and the dressing removed on day 10.
- The patient was followed up via telephone consultation and wound remained healed and intact with no adverse incidences reported.

The Avelle™ NPWT System interface optimised the wound healing potential by reducing lateral tension, removing oedema and creating a balanced, moist wound healing environment.

Complete Incision Management with Convatec

Convatec's comprehensive portfolio of NPWT and advanced surgical dressings allow for optimal post-operative incision management across your caseload.

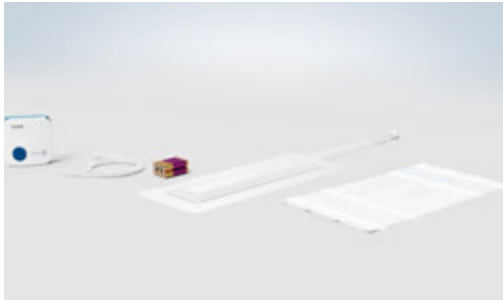
Patient Risk Assessment Profile



This pathway is intended for the purpose of enabling the HCP to independently review the recommendations presented. It is not the intent that the HCP rely primarily on any such recommendations to make a clinical diagnosis or treatment.

[§]The American Society of Anesthesiologists physical classification system designed to assess the fitness of patients before surgery.

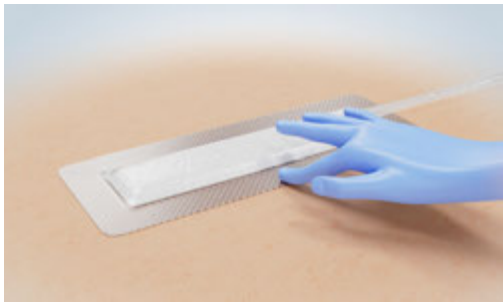
Application guide For health care professionals only



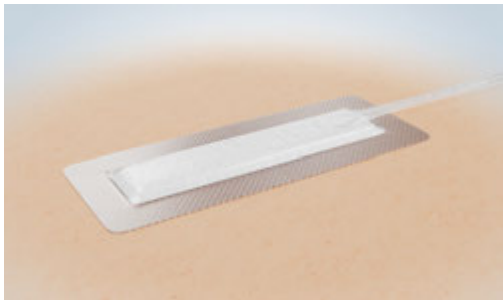
Remove the dressing from the sterile pack and remove the dressing release liners.



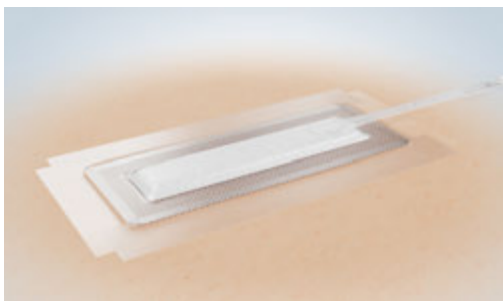
Apply the dressing with the port placed away from the wound onto intact skin. Ensure the port is placed upper most from the wound and that the wound is central to the remaining available pad space.



Smooth down the dressing border securing it in place whilst avoiding creasing.



Avoid any creasing or folds in the dressing which could compromise the seal. Reposition the borders if required.



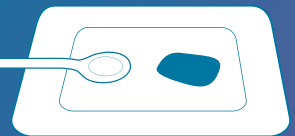
Apply fixation strips to all 4 sides of the dressing with a 1 cm overlap to all sides of the dressing. Convatec Hydrocolloid Sealing Strips may also be used.



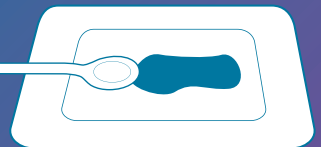
When the dressing has been applied securely, the pump can be connected and turned on. The green "□" indicator light will start to flash to confirm the pump is working.

Changing the dressing

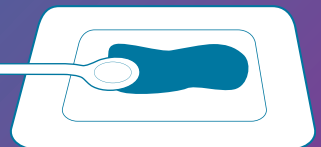
The dressing should be changed as clinically indicated for example if there are signs of leakage, pooling around the port, or loss of adhesion.



Dressing is properly positioned



Dressing needs to be changed



Dressing needs to be changed

Avelle™ NPWT System	Pad Size	Max. Incision Length	Product Code	Pack Size	Pip Code	NHS Code
12 cm x 21 cm / 4.7 in x 8.3 in	4 cm x 13 cm / 1.6 in x 5.1 in	6 cm / 2.4 in	421554	5	404- 8013	ELZ855
12 cm x 31 cm / 4.7 in x 12.2 in	4 cm x 23 cm / 1.6 in x 9.1 in	16 cm / 6.3 in	421555	5	404- 8021	ELZ854
12 cm x 41 cm / 4.7 in x 16.1 in	4 cm x 33 cm / 1.6 in x 13 in	26 cm / 10.2 in	422155	5	410-3248	ELZ965
16 cm x 16 cm / 6.3 in x 6.3 in	8 cm x 8 cm / 3.2 in x 3.2 in		421552	5	404- 8054	ELZ857
16 cm x 21 cm / 6.3 in x 8.3 in	8 cm x 13 cm / 3.2 in x 5.1 in		421553	5	404- 8047	ELZ856
21 cm x 26 cm / 8.3 in x 10.2 in	13 cm x 18 cm / 7.1 in x 7.1 in		422156	5	410-0598	ELZ981
26 cm x 26 cm / 10.2 in x 10.2 in	18 cm x 18 cm / 7.1 in x 7.1 in		422157	5	412-0606	ELZ982
Avelle™ Pump Unit	N/A		422285	1	404- 7866	ELZ853
Avelle™ Pump Carrying Case	N/A		446650	1	N/A	ELZ875
ConvaTec™ Hydrocolloid Sealing Strips	5 cm X 20 cm		422308	10	414-7864	ELB000

All dressing pouches include x6 Adhesive Film Fixation Strips

AQUACEL® Ag Surgical	Max. Incision Length	Total Fluid Management In-vitro /24hr	Product Code	Pack Size	NHS Code
9cm x 10cm / 3.5in x 4in	4 cm / 1.5 in	22.4	412009	10	ELY341
9cm x 15cm / 3.5in x 6in	9 cm / 3.5 in	38.4	412010	10	ELY342
9cm x 25cm / 3.5in x 10in	17 cm / 6.5 in	64.0	412011	10	ELY343
9cm x 30cm / 3.5in x 12in	22 cm / 8.5 in	80.0	420670	10	ELY403
9cm x 35cm / 3.5in x 14in	27 cm / 10.5 in	96.0	412012	10	ELY344

AQUACEL® Surgical	Max. Incision Length	Total Fluid Management In-vitro /24hr	Product Code	Pack Size	NHS Code
9 cm x 10 cm / 3.5 in x 4 in	4 cm / 1.5 in	22.4	412017	10	ELY323
9 cm x 15 cm / 3.5 in x 6 in	9 cm / 3.5 in	38.4	412018	10	ELY324
9 cm x 25 cm / 3.5 in x 10 in	17 cm / 6.5 in	64.0	412019	10	ELY325
9 cm x 30 cm / 3.5 in x 12 in	22 cm / 8.5 in	80.0	420669	10	ELY402
9 cm x 35 cm / 3.5 in x 14 in	27 cm / 10.5 in	96.0	412020	10	ELY326

ESENTA™ STING-FREE SKIN BARRIER					
Liquid per each	Product Description	Product Code	Pip Code	Box of	Boxes Per Case*
3 ml	ESENTA™ Sting-Free Skin Barrier Wipes	423282		30	20
28 ml	ESENTA™ Sting-Free Skin Barrier Pump Spray	423286	419-9808	1	12
50 ml	ESENTA™ Sting-Free Skin Barrier Spray	423288		1	12

ESENTA™ STING-FREE ADHESIVE REMOVER					
Liquid per each	Product Description	Product Code	Pip Code	Box of	Boxes Per Case*
3 ml	ESENTA™ Sting-Free Adhesive Remover Wipes	423281		1	12

*sold by the case

To learn more about the Avelle™ NPWT System, visit Avelle-NPWT.com

References

- Sandy-Hodgetts K et al (2022) Optimising prevention of surgical wound complications: Detection, diagnosis and prediction. London: Wounds International. Available online at: www.woundsinternational.com.
- Sandy-Hodgetts K et al (2020) International best practice recommendations for the early identification and prevention of surgical wound complications. Wounds International. Available online at: www.woundsinternational.com.
- Stryja J, Sandy-Hodgetts K, Collier M et al. Surgical site infection: preventing and managing surgical site infection across health care sectors. J Wound Care 2020; 29: 2, Suppl 2b, S1-S69.
- Waring MJ, Parsons D. Physicochemical characterisation of carboxymethylated spun cellulose fibers. Biomaterials. 2000;22:903-912.
- Parsons D, Bowler PG, Myles V, Jones SA. Silver antimicrobial dressings in wound management: a comparison of antibacterial, physical and chemical characteristics. WOUNDS. 2005;17:222-232.
- Jones SA, Bowler PG, Walker M. Antimicrobial activity of silver-containing dressings is influenced by dressing conformability with a wound surface. WOUNDS. 2005;17:263-270.
- Walker M, Hobot JA, Newman GR, Bowler PG. Scanning electron microscopic examination of bacterial immobilisation in a carboxymethylcellulose (AquaCel) and alginate dressings. Biomaterials. 2003;24(5):883-890.
- Newman GR, Walker M, Hobot J, Bowler P. Visualisation of bacterial sequestration and bactericidal activity within hydrating Hydrofiber® wound dressings. Biomaterials. 2006;27:1129-1139.
- Assessment of the in-vitro properties Avelle™ Negative Pressure Wound Therapy Dressing. WHR14520 MS128. Data on file. 2015. ConvaTec.
- HFM-2015-017. Data on file. 2015. ConvaTec Inc.
- Product Monograph AQUACEL Surgical Dressing Portfolio. ConvaTec Inc. AP-033893
- World Union of Wound Healing Societies (WUWHHS) Consensus Document. Closed surgical incision management: understanding the role of NPWT. Wounds International. 2016.
- American Society of Anesthesiologists. Available from: <https://www.asahq.org/resources/clinical-information/asa-physical-status-classification-system>.



SCAN HERE
TO LEARN MORE