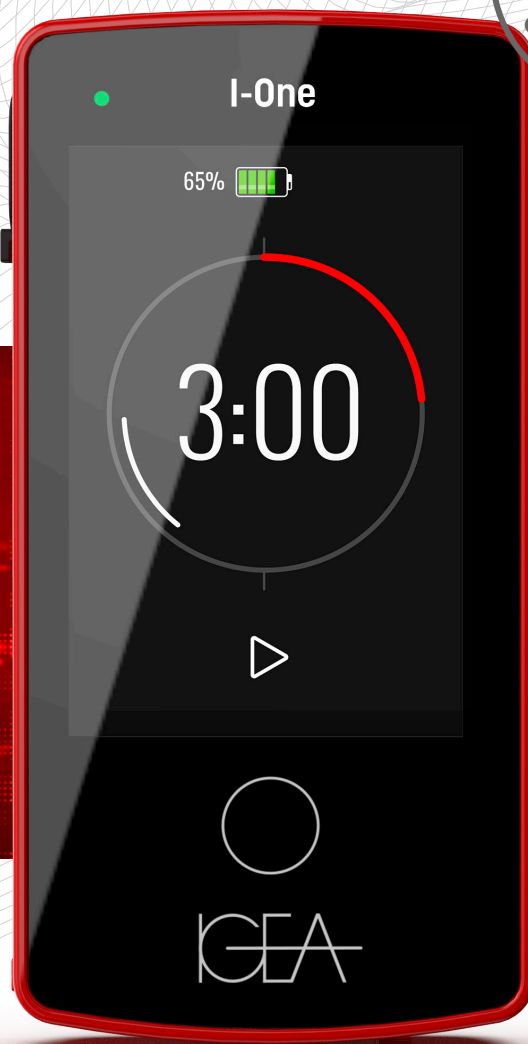


I-One[®] Therapy

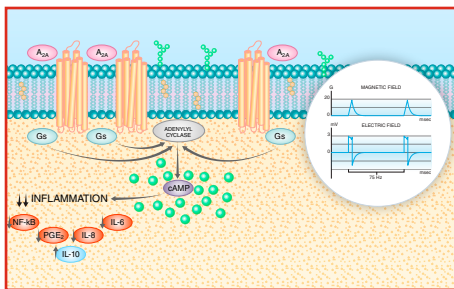
A comprehensive
joint treatment



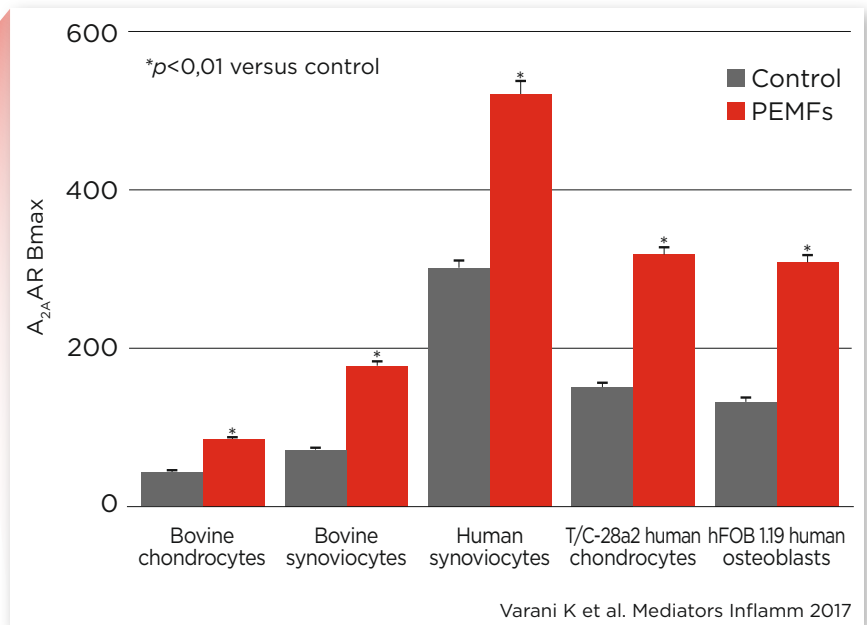
I-One[®] Therapy

Mechanism of action

PEMFs exposure



**UP-REGULATION
OF ADENOSINE A_{2A}
RECEPTORS ON
THE CELL SURFACE**



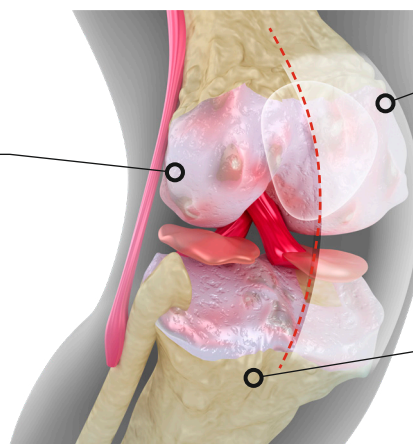
Inhibition of inflammation via an adenosine agonist effect

I-One[®] Therapy

A comprehensive joint care treatment

Cartilage

I-ONE[®] therapy stimulates the cartilage matrix synthesis and exerts a chondroprotective effect.



Synovia

I-ONE[®] therapy exerts an anti-inflammatory effect, decreasing the release of catabolic factors (TNF- α , IL-6, IL-8, IL-1 β , PGE) and increasing the production of anabolic factors (IL-10, TGF- β 1).

Subchondral bone

I-ONE[®] therapy prevents sclerosis of the subchondral bone and facilitates the reabsorption of bone edema.

The signal generated by I-ONE[®] therapy evenly permeates all joints

Cutting-edge technology that redefines the user experience and guarantees the highest quality and safety standards.

An MDR-certified device: The new European regulation on medical devices guarantees the highest level of protection.



Interface

Clear and effective visual communication ensuring ease of use and high compliance with the treatment

Count-down of the therapy session which supports the user in using the device in the best possible way and in adhering to daily therapy times

Patient assistance wizard

Stand-by function with the possibility of suspending the daily therapy cycle for several hours

Design

Innovative materials and ergonomic design

Removable belt clip to ensure therapy is safe

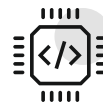
Technology



TFT display with high-definition touch function



High-performance, long-life lithium polymer batteries



Advanced electronics and firmware



Thin and lightweight applicators for increased user comfort

Early stages of osteoarthritis

I-ONE® therapy is suitable for patients with osteoarthritis grade 0-2 according to the Kellgren-Lawrence classification who present pain and functional limitations.



I-One® Therapy

- Has a chondroprotective effect
- Effectively alleviates pain symptoms
- Improves joint function



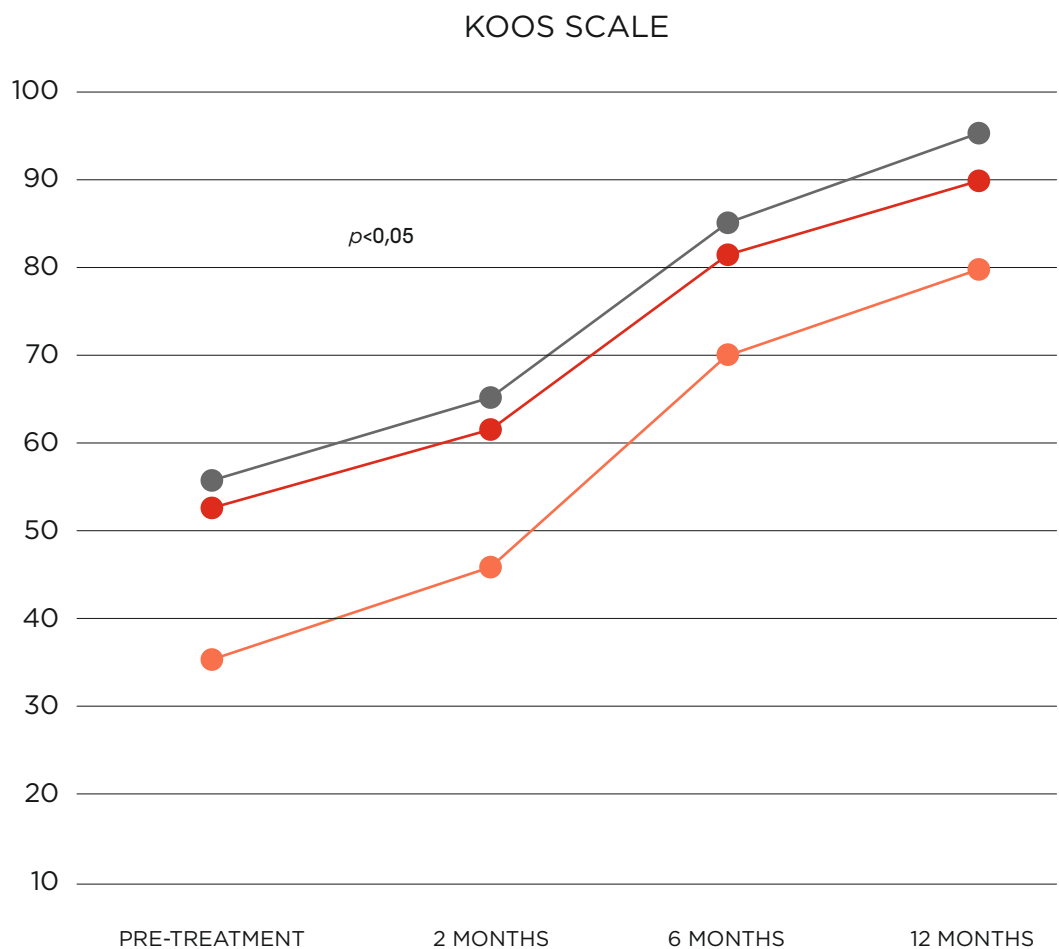
DAILY
ACTIVITIES



PAIN
RESOLUTION



QUALITY
OF LIFE



Gobbi A et al. JST, 2011

Patients stimulated with I-ONE® therapy showed an improvement in pain relief and quality of life with a full return to daily activities.

Bone edema / SONK

I-ONE® therapy is indicated in symptomatic patients with acute or chronic idiopathic, post-traumatic or degenerative bone edema.

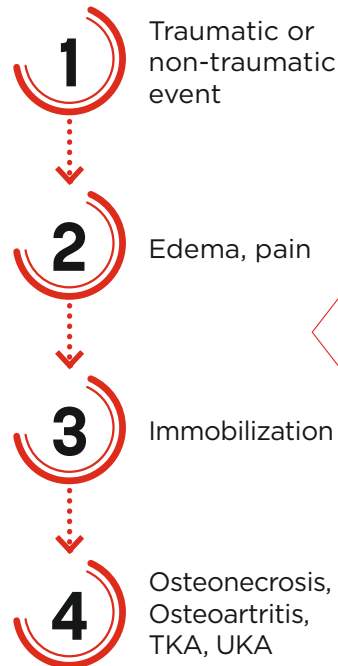
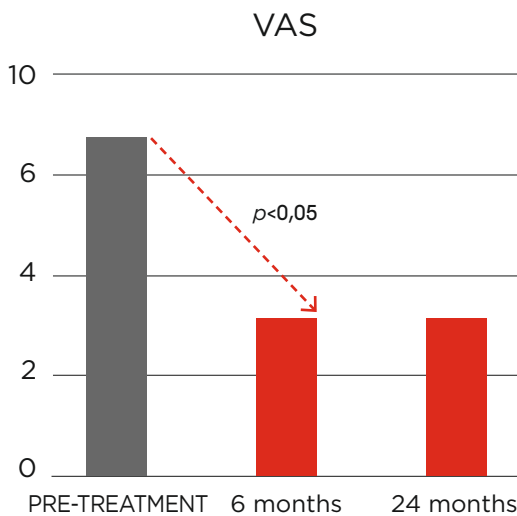


I-One® Therapy

- Accelerates reabsorption of edema
- Effectively alleviates pain symptoms
- Delays the need for surgical intervention



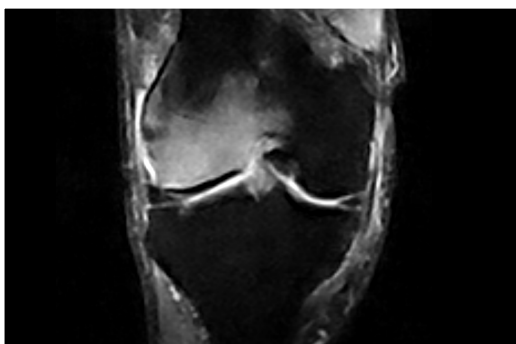
PAIN RESOLUTION IN
75%
OF PATIENTS **AT THE
6-MONTH FOLLOW-UP**



I-ONE® Therapy
CAN AVOID
CHRONICIZATION,
acting on the
inflammation,
edema and pain

CLINICAL CASE

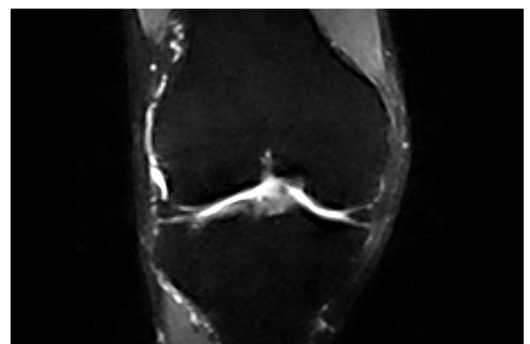
BEFORE



I-One® Therapy



AFTER 3 MONTHS



Courtesy of Dr. Marcheggiani Muccioli

CRPS

I-ONE® therapy is indicated in patients with Complex Regional Pain Syndrome Type I.



I-One® Therapy

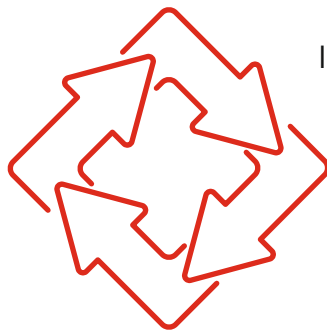
- Controls the joint inflammatory process
- Effectively alleviates pain symptoms
- Inhibits osteoclastogenesis

TRIGGER EVENT



01

Uncontrolled sympathetic response



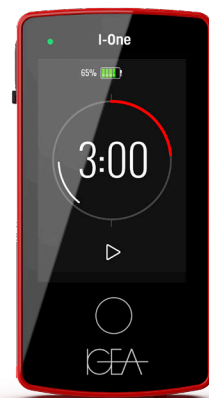
02

Inflammation, edema, pain



03

Limited function



I-ONE® Therapy CAN HALT THE VICIOUS CIRCLE, acting on the inflammation, edema and pain

04

Localised osteoporosis osteonecrosis

CLINICAL CASE

BEFORE



I-ONE® terapia



AFTER



Borelli PP. Chir Mano, Vol. 54(3) 2017

Patellofemoral pain syndrome

I-ONE[®] therapy is indicated in patients with PFS who complain of localised pain in the front of the knee when walking or doing sports.



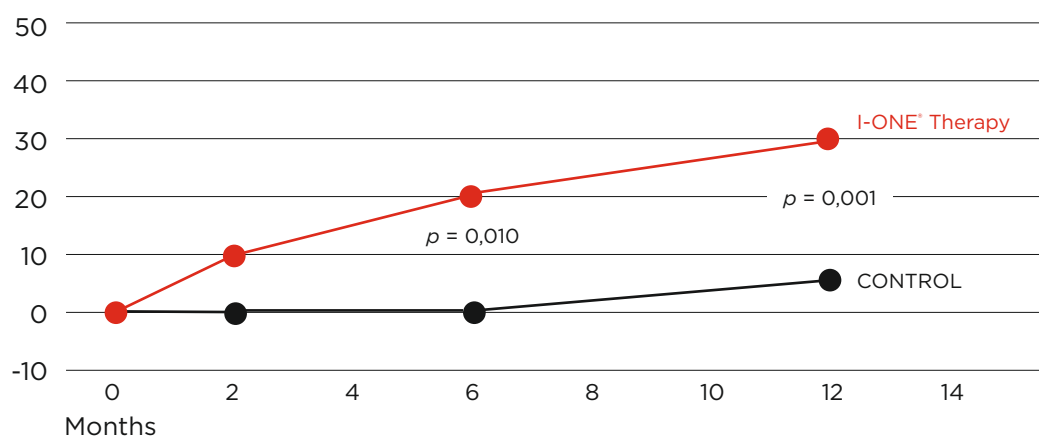
I-One[®] Therapy

- Effectively alleviates pain symptoms
- Reduces the requirements for NSAIDs
- Enables a speedier return to sporting activities



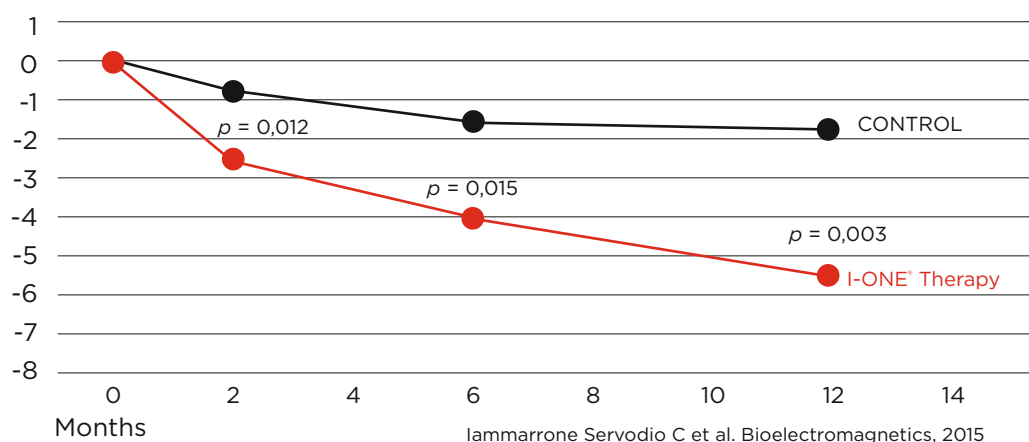
RETURN TO SPORTS

VISA score variation



PAIN RESOLUTION

VAS scale variation



Iammarrone Servodio C et al. Bioelectromagnetics, 2015

Clinical indications

EARLY STAGES OF
OSTEOARTHRITIS

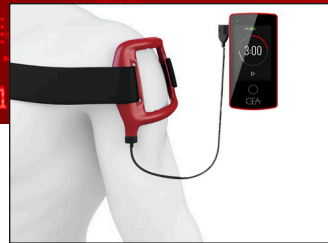
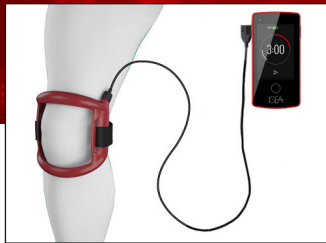
ARTICULAR INFLAMMATORY
PROCESSES

INTRA-ARTICULAR SWELLING

BONE EDEMA / SONK

PATELLOFEMORAL PAIN
SYNDROME

CRPS



Dosage/Treatment time: 4 hours/day for 30-60 days. The therapy is repeatable

REFERENCES

- Benazzo F et al. Cartilage repair with osteochondral autografts in sheep: effect of biophysical stimulation with pulsed electromagnetic fields. J Orthop Res. 2008 May;26(5):631-42
- Fini M et al. Effect of pulsed electromagnetic field stimulation on knee cartilage, subchondral and epiphyseal trabecular bone of aged Dunkin Hartley guinea pigs. Biomed Pharmacother. 2008 Dec;62(10):709-15
- Gobbi A et al. L'uso dei campi elettromagnetici pulsati in pazienti sintomatici con lesioni degenerative della cartilagine del ginocchio: un rapporto preliminare. Journal of Sports Traumatology. 2011;Vol. 28, No. 4. Dicembre 2011
- Ongaro A et al. Chondroprotective effects of pulsed electromagnetic fields on human cartilage explants. Bioelectromagnetics. 2011 Oct;32(7):543-51
- Bruscoli R. Necrosi del CFM del ginocchio in un podista master. Trattamento con CEMP. ReaLiMe, Maggio 2012;14:15
- Ongaro A et al. Electromagnetic fields (EMFs) and adenosine receptors modulate prostaglandin E(2) and cytokine release in human osteoarthritic synovial fibroblasts. J Cell Physiol. 2012 Jun;227(6):2461-9
- Marcheggiani Muccioli GM et al. Conservative treatment of spontaneous osteonecrosis of the knee in the early stage: Pulsed electromagnetic fields therapy. Eur J Radiol. 2013 Mar;82(3):530-7
- Gobbi A et al. Symptomatic Early Osteoarthritis of the Knee Treated With Pulsed Electromagnetic Fields: Two-Year Follow-up. Cartilage. 2014 Apr ; 5(2) :76-83
- Ongaro A et al. Pulsed electromagnetic fields stimulate osteogenic differentiation in human bone marrow and adipose tissue derived mesenchymal stem cells. Bioelectromagnetics. 2014 Sep;35(6):426-36
- Veronesi F et al. In vivo effect of two different pulsed electromagnetic field frequencies on osteoarthritis. J Orthop Res. 2014 May;32(5):677-85
- Fini M et al. Razionale d'uso della stimolazione biofisica nell'algodistrofia. Chirurgia della Mano - Vol. 52 (3) 2015
- Veronesi F et al. Experimentally induced cartilage degeneration treated by pulsed electromagnetic field stimulation; an in vitro study on bovine cartilage. BMC Musculoskelet Disord. 2015 Oct 20;16(1):308
- Veronesi F et al. Pulsed electromagnetic fields combined with a collagenous scaffold and bone marrow concentrate enhance osteochondral regeneration: an in vivo study. BMC Musculoskelet Disord. 2015 Sep 2;16:233
- Massari L. La stimolazione biofisica articolare. Giornale Italiano di Ortopedia e Traumatologia. 2016;42(Suppl.1):S73-S78
- Servodio Iammarrone C et al. Is there a role of pulsed electromagnetic fields in management of patellofemoral pain syndrome? Randomized controlled study at one year follow-up. Bioelectromagnetics. 2016 Feb;37(2):81-8
- Massari L et al. Impiego clinico della stimolazione elettrica in ortopedia e traumatologia. Giornale Italiano di Ortopedia e Traumatologia. 2017;43:105-106
- Pagani S et al. Complex Regional Pain Syndrome Type I, a Debilitating and Poorly Understood Syndrome. Possible Role for Pulsed Electromagnetic Fields: A Narrative Review. Pain Physician. 2017 Sep;20(6):E807-E822
- Varani K et al. Adenosine Receptors as a Biological Pathway for the Anti-Inflammatory and Beneficial Effects of Low Frequency Low Energy Pulsed Electromagnetic Fields," Mediators of Inflammation, vol. 2017, Article ID 2740963, 2017. doi:10.1155/2017/2740963

IGEA/EO21/04/2024

This brochure relates to the I-ONE series Mod.CBA04 device.

The Device complies with MDR, Medical Device Regulation (EU) 2017/745 and is marked **CE** 0051.

It is compliant with IEC 60601-1 for the safety and essential performance of medical devices and the technical standards referred to therein. It is compliant with IEC 60601-1-11 for the safety of medical devices for home use.



IGEA MEDICAL UK
Suites 1 & 2, Parkhill Business
Centre Annexe,
Walton Road Wetherby
LS22 5DZ West Yorkshire (UK)
www.igeamedical.com

CUSTOMER SERVICE

 +44 01937 547065  customerservicesuk@igeamedical.com