

CenoGel® & CenoPutty®



| Code | Item | Description | Volume/Quantity |
|-------|----------------|-------------|-----------------|
| 19614 | Cenobone-Gel | FDBA | 2.5cc |
| 19615 | Cenobone-Gel | FDBA | 5cc |
| 19654 | Cenobone-Gel | DFDBA | 2.5cc |
| 19655 | Cenobone-Gel | DFDBA | 5cc |
| 19714 | Cenobone-Putty | FDBA | 2.5cc |
| 19715 | Cenobone-Putty | FDBA | 5cc |
| 19716 | Cenobone-Putty | FDBA | 10cc |
| 19754 | Cenobone-Putty | DFDBA | 2.5cc |
| 19755 | Cenobone-Putty | DFDBA | 5cc |
| 19756 | Cenobone-Putty | DFDBA | 10cc |

CenoTendon®




| Code | Item | Description | Volume/Quantity |
|-------|---|--|-----------------|
| 41209 | Patellar Bone + Patellar Tendon + Tibial Bone (BTB) | Pre-shaped (W)= 10-15mm (L)= 80-110mm | 1 piece |
| 42101 | Achilles Tendon without Calcaneus | Whole (W)= 10-20mm (L)= 160-300mm | 1 piece |
| 42201 | Achilles Tendon with Calcaneus | Whole (W)= 10-20mm (L)= 160-300mm | 1 piece |
| 43101 | Anterior Tibialis Tendon | Whole (Folded Diameter)= 6-12mm (L)= 220-380mm | 1 piece |
| 44101 | Posterior Tibialis Tendon | Whole (Folded Diameter)= 6-12mm (L)= 220-380mm | 1 piece |
| 45101 | Proneus Longus Tendon | Whole (Folded Diameter)= 6-12mm (L)= 220-380mm | 1 piece |

CenoDerm® & CenoMembrane®



| Code | Item | Description | Volume/Quantity |
|-------|--------------|-----------------------|-----------------|
| 31244 | CenoDerm | 40x40mm T= 0.6-0.9mm | 1 piece |
| 31271 | CenoDerm | 75x100mm T= 0.6-0.9mm | 1 piece |
| 36244 | CenoMembrane | 40x40mm T= 0.6-0.9mm | 1 piece |
| 36271 | CenoMembrane | 75x100mm T= 0.6-0.9mm | 1 piece |

 **Note:** Tissues listed here don't reflect the complete stock of our products, but merely a representation of the type and sample sizes available at Cenobiologics Ltd. Also, as we are an original producer of these products in the UK, we can produce any bespoke shapes and sizes. Please contact Cenobiologics or your representative for information about items not listed.

Ceno Biologics

Technology Enhancing Life

Orthopaedic and Spine Surgeries



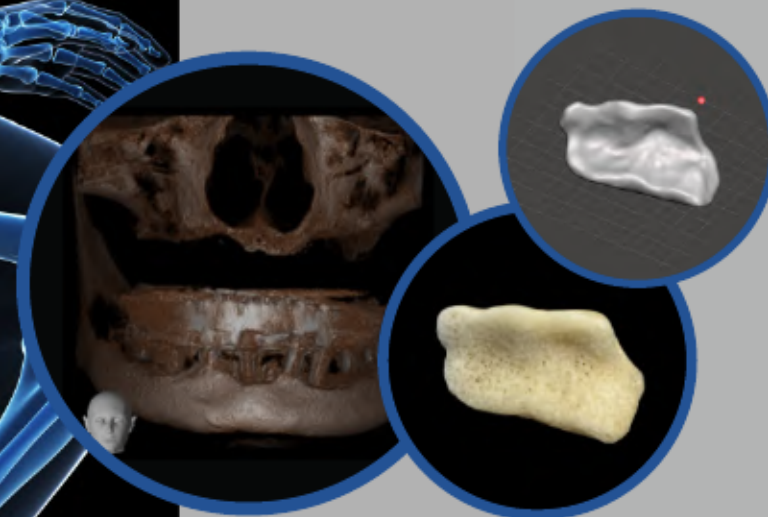
Licensed by the Human Tissue Authority (HTA), Cenobiologics is a UK company processing allograft bio-implants for human transplantation.

In orthopaedics and spine surgeries we offer CenoBone®: FDBA & DFDBA in various sizes and shapes such as powders, crushed, chips, matchsticks, shafts, rings, HTO wedges, bicortical iliac strips, tricortical iliac wedges, putty, gel, etc. Also, we produce CenoTendon®: cryopreserved allograft tendons including Achilles, Anterior Tibialis, Posterior Tibialis, Proneus Longus, BTB, etc for knee surgeries and sports medicine.

Cenobiologics is an Institutional Member of the European Association of Tissue and Cell Banks (EATCB) and ISO 13485 certified for procurement, processing and distribution of sterile cellular and tissue based medical devices for surgical applications.

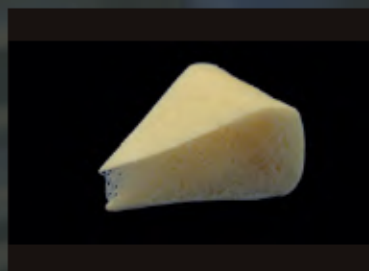
As an original producer of sterile cellular and tissue-based medical devices, we can produce any shapes and sizes to suit surgeons' requirements.

Also, we provide bespoke products from DICOM files of patients' CT Scans.





| Code | Item | Description | Volume/Quantity |
|-------|----------------------------------|---------------------|-----------------|
| 10113 | Femoral Cross Section (Parallel) | H= 10mm | 1 piece |
| 10114 | Femoral Cross Section (Parallel) | H= 12mm | 1 piece |
| 10115 | Femoral Cross Section (Parallel) | H= 14mm | 1 piece |
| 10116 | Femoral Cross Section (Parallel) | H= 16mm | 1 piece |
| 10117 | Femoral Cross Section (Parallel) | H= 18mm | 1 piece |
| 10118 | Femoral Cross Section (Parallel) | H= 20mm | 1 piece |
| 10121 | Femoral Shaft / Segment | H= 40mm | 1 piece |
| 10122 | Femoral Shaft / Segment | H= 60mm | 1 piece |
| 10123 | Femoral Shaft / Segment | H= 80mm | 1 piece |
| 10124 | Femoral Shaft / Segment | H= 100mm | 1 piece |
| 12110 | Fibular Ring (Parallel) | H= 6mm | 1 piece |
| 12112 | Fibular Ring (Parallel) | H= 8mm | 1 piece |
| 12113 | Fibular Ring (Parallel) | H= 10mm | 1 piece |
| 12114 | Fibular Ring (Parallel) | H= 12mm | 1 piece |
| 12115 | Fibular Ring (Parallel) | H= 14mm | 1 piece |
| 12120 | Fibular Shaft / Segment | H= 20mm | 1 piece |
| 12121 | Fibular Shaft / Segment | H= 40mm | 1 piece |
| 12122 | Fibular Shaft / Segment | H= 60mm | 1 piece |
| 12123 | Fibular Shaft / Segment | H= 80mm | 1 piece |
| 12124 | Fibular Shaft / Segment | H= 100mm | 1 piece |
| 13112 | Humeral Cross Section (Parallel) | H= 8mm | 1 piece |
| 13113 | Humeral Cross Section (Parallel) | H= 10mm | 1 piece |
| 13114 | Humeral Cross Section (Parallel) | H= 12mm | 1 piece |
| 13115 | Humeral Cross Section (Parallel) | H= 14mm | 1 piece |
| 13116 | Humeral Cross Section (Parallel) | H= 16mm | 1 piece |
| 13120 | Humeral Shaft / Segment | H= 20mm | 1 piece |
| 13121 | Humeral Shaft / Segment | H= 40mm | 1 piece |
| 13122 | Humeral Shaft / Segment | H= 60mm | 1 piece |
| 13123 | Humeral Shaft / Segment | H= 80mm | 1 piece |
| 13124 | Humeral Shaft / Segment | H= 100mm | 1 piece |
| 16133 | Tricortical Iliac Crest Wedge | H= 10mm L= 22-30mm | 1 piece |
| 16134 | Tricortical Iliac Crest Wedge | H= 12mm L= 22-30mm | 1 piece |
| 16135 | Tricortical Iliac Crest Wedge | H= 14mm L= 22-30mm | 1 piece |
| 16136 | Tricortical Iliac Crest Wedge | H= 16mm L= 22-30mm | 1 piece |
| 16137 | Tricortical Iliac Crest Wedge | H= 18mm L= 22-30mm | 1 piece |
| 16138 | Tricortical Iliac Crest Wedge | H= 20mm L= 22-30mm | 1 piece |
| 16163 | Ilium Bicortical Strip | 20x20mm (T)= 8-16mm | 1 piece |
| 16165 | Ilium Bicortical Strip | 20x40mm (T)= 8-16mm | 1 piece |
| 16166 | Ilium Bicortical Strip | 20x60mm (T)= 8-16mm | 1 piece |
| 16172 | Tricortical Iliac Crest Strip | 10x20mm (T)= 8-30mm | 1 piece |
| 16175 | Tricortical Iliac Crest Strip | 20x40mm (T)= 8-30mm | 1 piece |



| Code | Item | Description | Volume/Quantity |
|-------|--|---------------------|-----------------|
| 16176 | Tricortical Iliac Crest Strip | 20x60mm (T)= 8-30mm | 1 piece |
| 16179 | Tricortical Iliac Crest Strip | 10x30mm (T)= 8-30mm | 1 piece |
| 19055 | Cortical Cancellous Crushed | 2-5mm | 5cc |
| 19056 | Cortical Cancellous Crushed | 2-5mm | 10cc |
| 19059 | Cortical Cancellous Crushed | 2-5mm | 20cc |
| 19065 | Cortical Cancellous Chips | 2-10mm | 5cc |
| 19066 | Cortical Cancellous Chips | 2-10mm | 10cc |
| 19069 | Cortical Cancellous Chips | 2-10mm | 20cc |
| 19075 | Cancellous Cube | 5x5x5mm | 5 pieces |
| 19076 | Cancellous Cube | 5x5x5mm | 10 pieces |
| 19085 | Cancellous Cube | 10x10x10mm | 5 pieces |
| 19086 | Cancellous Cube | 10x10x10mm | 10 pieces |
| 19092 | Cancellous Matchstick | 5x35mm | 5 pieces |
| 19093 | Cancellous Matchstick | 5x35mm | 10 pieces |
| 19133 | Tricortical Patellar Wedge | H= 10mm L= 22-30mm | 1 piece |
| 19134 | Tricortical Patellar Wedge | H= 12mm L= 22-30mm | 1 piece |
| 19135 | Tricortical Patellar Wedge | H= 14mm L= 22-30mm | 1 piece |
| 19136 | Tricortical Patellar Wedge | H= 16mm L= 22-30mm | 1 piece |
| 19137 | Tricortical Patellar Wedge | H= 18mm L= 22-30mm | 1 piece |
| 19138 | Tricortical Patellar Wedge | H= 20mm L= 22-30mm | 1 piece |
| 19154 | Cortico-Cancellous Strip | 10x40mm (T)≥4mm | 1 piece |
| 19155 | Cortico-Cancellous Strip | 20x40mm (T)≥4mm | 1 piece |
| 19156 | Cortico-Cancellous Strip | 20x60mm (T)≥4mm | 1 piece |
| 19181 | Cancellous Block | 15x15x30mm | 1 piece |
| 19182 | Cancellous Block | 20x20x30mm | 1 piece |
| 19455 | Deminerlized Cortical Cancellous Crushed | 2-5mm | 5cc |
| 19456 | Deminerlized Cortical Cancellous Crushed | 2-5mm | 10cc |
| 19459 | Deminerlized Cortical Cancellous Crushed | 2-5mm | 20cc |
| 19465 | Deminerlized Cortical Cancellous Chips | 2-10mm | 5cc |
| 19466 | Deminerlized Cortical Cancellous Chips | 2-10mm | 10cc |
| 19469 | Deminerlized Cortical Cancellous Chips | 2-10mm | 20cc |
| 19475 | Deminerlized Cancellous Cubes | 5x5x5mm | 5 pieces |
| 19476 | Deminerlized Cancellous Cubes | 5x5x5mm | 10 piece |
| 19485 | Deminerlized Cancellous Cubes | 10x10x10mm | 5 pieces |
| 19486 | Deminerlized Cancellous Cubes | 10x10x10mm | 10 piece |
| 19492 | Deminerlized Cancellous Matchsticks | 5x35mm | 5 pieces |
| 19493 | Deminerlized Cancellous Matchsticks | 5x35mm | 10 piece |
| 19501 | Deminerlized Cancellous Block | 15x15x30mm | 1 piece |
| 19502 | Deminerlized Cancellous Block | 20x20x30mm | 1 piece |