



# Surginovi

Rapid Reproducible Results



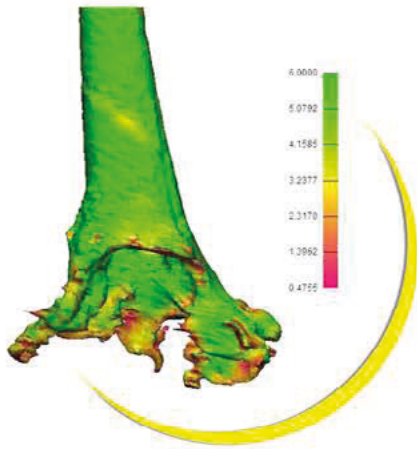
## Head Office:

Cardiff House, Cardiff Road,  
Barry, Vale of Glamorgan,  
Wales, United Kingdom, CF63 2AW  
Telephone : + 44 (0) 1446 508002  
Mobile : +44 (0) 7956 716670  
Email : [info@surginovi.co.uk](mailto:info@surginovi.co.uk)

## Middle Eastern Regional Office:

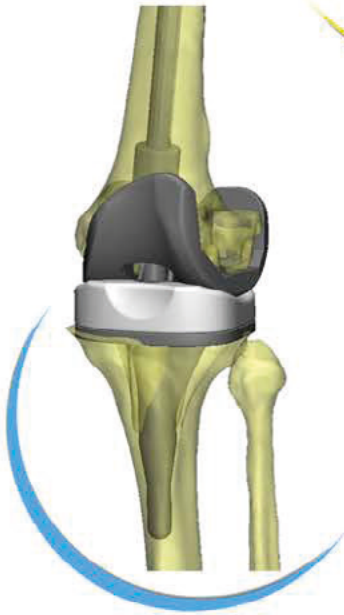
Villa 13 W, Fourth District,  
Sheikh Zayed City, Giza,  
Greater Cairo, Egypt 12588  
Mobile : + 20 (0) 100 202 6789  
Email : [info@surginovi.co.uk](mailto:info@surginovi.co.uk)

[www.surginovi.co.uk](http://www.surginovi.co.uk)



**1**

**IMAGING**



**2**

**DESIGN**



**3**

**PROTOTYPING**

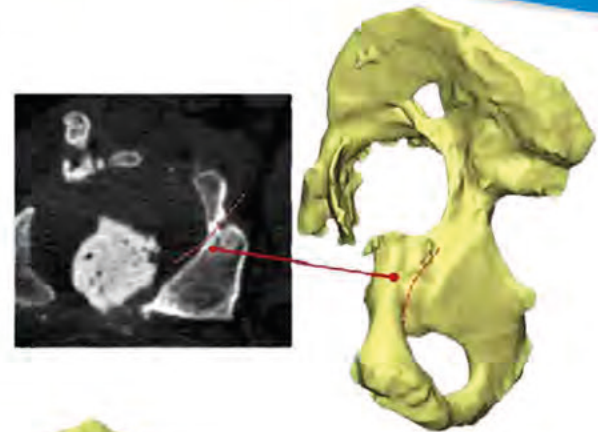


**4**

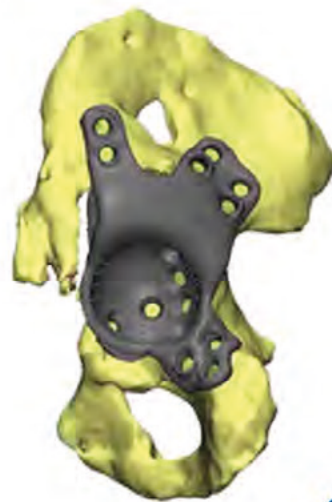
**MANUFACTURING**

Once the patient's CT scan has been received, it is precisely measured and segmented by our highly skilled bioengineers to produce a high-resolution 3D anatomical model. Bone density in the affected region is also recorded and assessed to ensure optimum long-term fixation. An initial payment based on our estimate is now required.

*To upload the CT scan data, please go to: [www.surginovi.co.uk](http://www.surginovi.co.uk) and follow the instructions.*



The 3D bone model is then orientated and disarticulated to expose the two joint surfaces. This allows for the precise design of implant(s) specific to the patient's unique anatomy. Accurate fit is then confirmed during 'virtual' joint replacement surgery.



The final implant design requires the operating surgeon's approval based on the accurate fit of the physical 3D printed model of the implant and the physical 3D printed bone model. An itemised quote is then issued for the immediate payment of the balance owed, in the currency selected by the end-user, prior to manufacture.



Once the the final design is agreed, it is sent electronically to our local partner who are experts in selective laser melting, a leading technology that produces medical grade titanium and stainless steel alloy components. The implants are then post-processed, sterilised, and packaged before being despatched to the customer using their preferred courier.





**SurgiNovi**

Rapid Reproducible Results



**SurgiNovi**

# **Patient Specific Custom-made Implants**

For skeletal deformities, osteosarcomas, malunions, and cavities caused by advanced cases of severe bone loss.

[www.surginovi.co.uk](http://www.surginovi.co.uk)