

## It Starts with the Mesh

### Initiator Free Mesh for Less Patient Exposure.

Exofin fusion® skin closure system removes all initiators from the mesh itself to reduce patient exposure. Instead, the initiator is delivered with the polymerized adhesive.

Extracted samples showed a **61% REDUCTION\*** in the amount of initiator that the patient could be exposed to.

## Improved Closure Strength\*

The new mesh pattern has larger openings which allow more adhesive to flow through the mesh and on to the patient's skin. The more open design will allow the adhesive to create a stronger bond on the skin and keep the mesh secure and in place for the desired amount of time.



Unlike our competition, the exofin fusion® adhesive will polymerize (dry) on the patient's skin therefore there is no need to wipe off the excess. Care should be given to adhere the mesh edges to the surrounding skin creating a waterproof barrier while intact.

Lastly, measured amounts of adhesive have been added to the kit providing just the right amount of adhesive for each size of mesh.

### Actual exofin fusion® patient



\*Data available upon request.

## Unique 30cm Mesh Length

- Longer 30cm mesh which is ideal for the orthopedic area of the hospital. Great for use on **Total Knee Replacement** procedures.
- Blisters can occur when mesh is too short for the patient, especially obese patients.
- Longer length mesh gives enough slack at both the proximal and distal ends to reduce force on skin when at 90-degree angle during rehab.
- Longer length mesh eliminates the need to use multiple 22cm devices.
- No cutting and overlapping required when adding additional mesh strip.
- Cost savings versus 42cm and 60cm.



Contact your local representative for evaluation samples.

## ORDER INFORMATION

Use the guide below to see specific information on the complete Chemence Medical line of products. To complete your order, call or email one of our Chemence Medical, Inc. Support Representatives at **+1 844-633-4583** or [customerservice@chemencemedical.com](mailto:customerservice@chemencemedical.com).

PRODUCT CODE #	PRODUCT DESCRIPTION	CONTENTS (Quantity)	DIMENSIONS (LxWxH in cm)	CUBE (CM <sup>3</sup> )	WEIGHT (KG)
<b>exofin fusion® Skin Closure Systems</b>					
EF70422CE	exofin fusion® Skin Closure System 22cm	2 Systems	33.338 x 10.478 x 11.43	3992.43	0.181 kg
EF70430CE	exofin fusion® Skin Closure System 30cm	2 Systems	33.338 x 10.478 x 11.43	3992.43	0.181 kg
EF70460CE	exofin fusion® Skin Closure System 60cm	2 Systems	33.338 x 10.478 x 11.43	3992.43	0.181 kg
<b>exofin® Topical Skin Adhesives</b>					
EX91510	exofin® Micro 0.5mL	10	12.7 x 6.35 x 6.8262	550.50	0.1007 kg
EX91011	exofin® 1mL	10	12.7 x 6.35 x 6.8262	550.50	0.1007 kg

### To Place an Order:

✉ [customerservice@chemencemedical.com](mailto:customerservice@chemencemedical.com) ☎ +1 844-MED-GLUE (633-4583) 📍 1121 Alderman Drive, Alpharetta, GA 30005



Chemence Ltd.  
13 Princewood Road, Corby  
Northamptonshire, NN17 4XD, UK  
**+ 44 (0)1536 402600**

Chemence Medical, Inc.  
200 Technology Drive  
Alpharetta, GA, 30005, USA  
**+1 844-633-4583**

Chemence Sp. z o.o.  
Aleja Jana Pawła II 22  
00-133 Warsaw, Poland  
**+1 770-658-4302**

[chemencemedical-intl.com](http://chemencemedical-intl.com)

All Contents © Copyright 2023 Chemence Medical, Inc. All rights reserved.

No modification or use, or further reproduction or copying, of any of the content is authorized without the express consent of Chemence Medical, Inc.

**exofinfusion®**  
SKIN CLOSURE SYSTEM



## Surgeons' Complaints with Skin Closure Systems

Blistering of the Skin

Allergic Reactions

Skin Tears

Exofin fusion® addresses each of these issues to reduce potential patient risk. Initiator free mesh reduces skin reactions. Curved mesh reduced skin strain and blistering.

### exofin fusion® Solution:



Initiator Free Mesh



21-day Microbial Barrier\*



Curved to Reduce Skin Tension

### Common exofin fusion® Applications



Orthopedics for Total Joint/Hips and Knees



Plastic Surgery



Cardiovascular Closure of the Chest/Sternum



Ortho/Neuro for Spine



Obstetrics & Gynecology

\*Data available upon request.

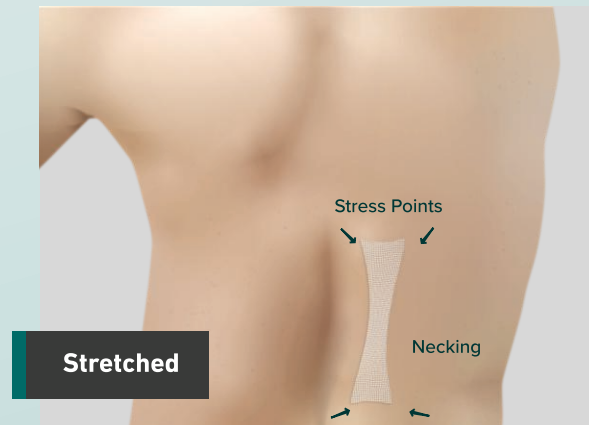
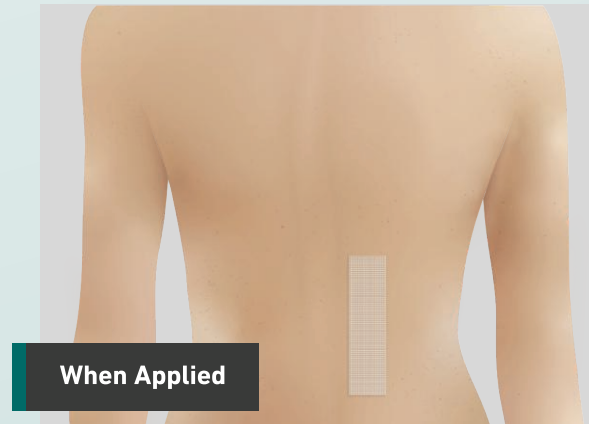
## Reducing Skin Stress and Strain

The traditional design of skin closure systems lend themselves to stress between the highly elastic skin and the rigid polyester mesh. Straight lines can cause friction to occur where stress points are located, and are typically in the four corners.

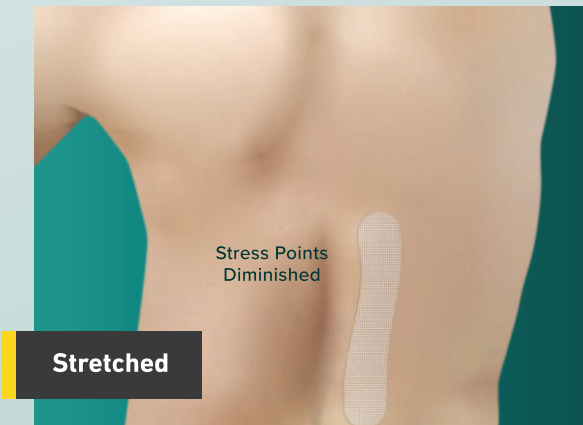
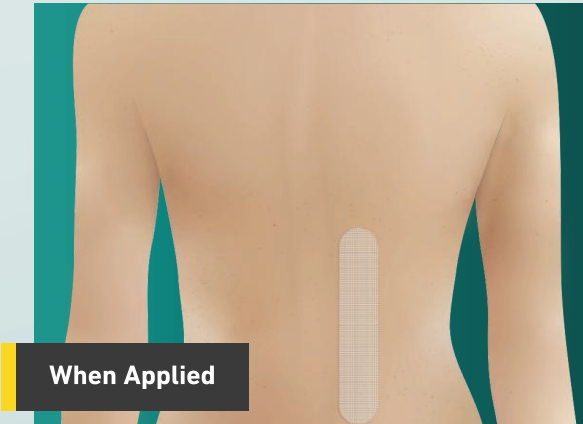
The shape of the exofin fusion® mesh features curved ends. This reduces the area that is under stress and dissipates the friction and force across the entirety of the material.

### ► MESH UNDER STRESS

#### Traditional Design



#### Curved Mesh Design



### 21-Day Microbial Barrier

- ✓ Exofin fusion® skin closure system provides a 21 day microbial barrier\*
- ✓ The longest in the industry

\*Effective as long as mesh system remains fully intact

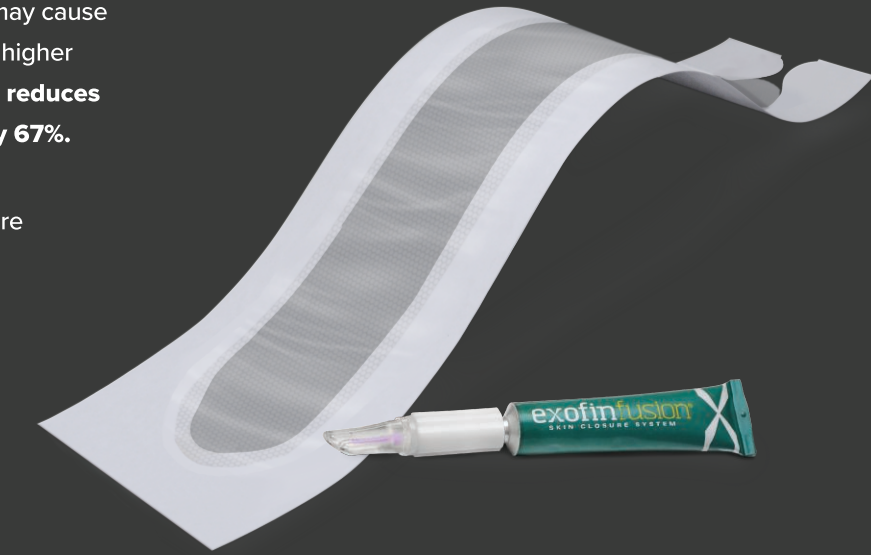
## The Shape of Things to Come

### Introducing exofin fusion® Curved Mesh

The rectangular shape of competitive products may cause skin damage sooner under cyclic loading due to higher forces and stresses. The shape of exofin fusion® reduces the area for potential damage due to stress by 67%.

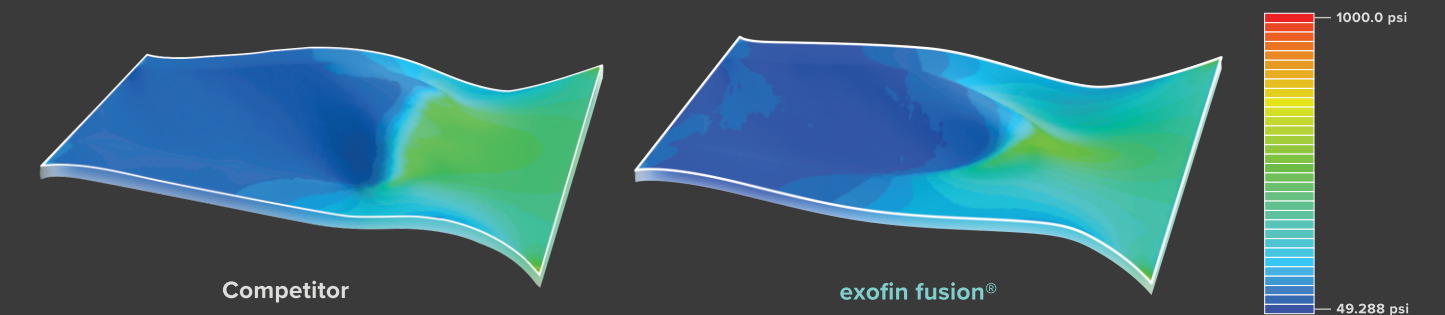
Tissue subjected to the stresses in these areas are susceptible to skin damage.

The curved shape dissipates the stress throughout the entire mesh patch as opposed to a specific stress point such as a corner, or across the top or bottom.



### Substantial Reduction in Skin Stress\*

Strain = 33.3% (Model Length 152.44mm)



	Competitor	exofin fusion®	REDUCTION (%)
High Stress Area (mm²)	1258	417	66.8%
Max Stress (psi)	933	730	21.8%
Total Force (lbf)	1913	1095	42.8%

\*Content provided by D&D Innovative Research (DDIR) LLC, 7/29/2019.