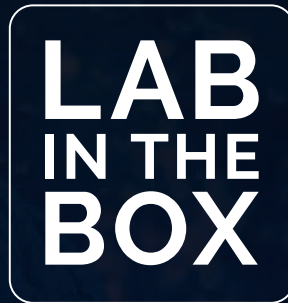




LIPOCUBE SVF

FOR ORTHOPAEDICS



AUTOLOGOUS | NON - ENZYMATIC | SINGLE USE

Lipocube™ is a single - use mechanical separation device
used for harvesting SVF from autologous fat tissue.



ADVANTAGES OF LIPOCUBE™

01

There is no need for a GMP facility your practice is basically your lab.

02

It is an easy to use device enabling high cell yields.

03

The isolation time is much shorter.

04

There is no need for expert staff.

05


The manipulation of cells is minimum, a key point in legal issues.

06

It is a cost efficient method.

07

Fully enclosed system thus sterile environment.



The Lipocube™ is a state-of-the-art mechanical digestion device for the isolation of SVF from lipoaspirate.

FIELDS OF APPLICATION



Cartilage



Bone



Tendons



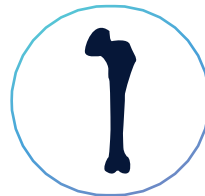
Osteoarthritis



Chondromalacia



Meniscus Tear



**Osteonecrosis Of
Femoral Head**



Tendon Injuries

The concentrated regenerative cell population released by the breakdown of adipose tissue is called the Stromal Vascular Fraction (SVF). SVF is widely used today as a potential solution to various orthopaedic problems.

Due to the SVF cell population's ability to regenerate cartilage, bone and tendons, it is widely used in the treatment of osteoarthritis (OA), chondromalacia, meniscus tear, femoral head osteonecrosis, and tendon injuries.



Lipocube Biotechnology is based in London, United Kingdom, operates globally about autologous ADSC regenerative therapies.

AMERICA
FDA 510K in the progress

EUROPE
CE Marking

OCEANIA
ARTG Certificate



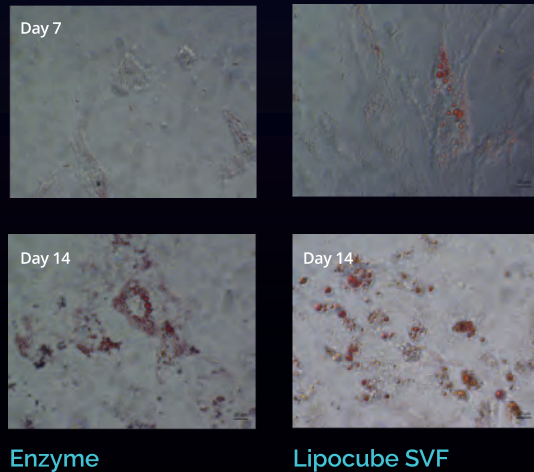


Autologous fat is harvested from the patient without the need of general anaesthesia. The fat tissue is mechanically digested using the **Lipocube™SVF** in a closed sterile system. The mechanically digested SVF is centrifuged in a specially designed **Cell Drive**. The concentrated SVF is separated and applied to the patient.

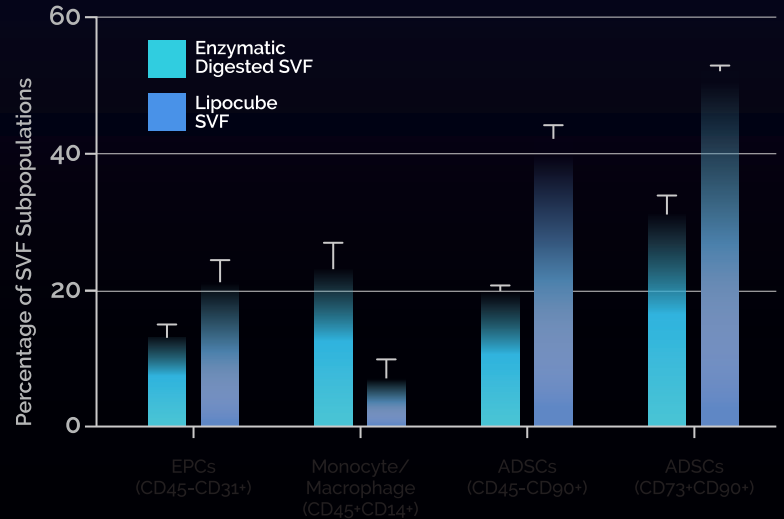
FLOW CYTOMETER RESULTS

The comparison of cell phenotypes by flow cytometer as shown. Histograms demonstrated that enzymatic digested SVF group (Black Line) and Lipocube SVF group (Grey Line). CD34, CD13, CD73, CD90 and CD146 known as universal stem cell markers, found approximately 2 fold higher in Lipocube SVF group in compared with control group.

CELL DIFFERTIATION AND GENE EXPRESSION RESULTS



SCIENTIFIC DATA





Advantech Surgical Ltd
1st Floor, The White House
42 The Terrace, Torquay
Devon, TQ1 1DE

Tel: 0845 130 5866

mail@advantechsurgical.com



www.lipocube.com