



Product Portfolio



Primary Hip Solutions



FURLONG® H-A.C

Cementless Total Hip Replacement Implanted since 1985, and with the accolade as the world's first implanted hydroxyapatite ceramic coated stem, the Furlong® H-A.C has over 30 years supporting clinical evidence.



FURLONG EVOLUTION®

Cementless Total Hip Replacement Successfully implanted since 2011, The Furlong Evolution® Hip provides the solution for Surgeons demanding a bone conserving stem ideally designed for conventional and tissue sparing approaches.



AVANTEON®

Cemented Total Hip Replacement Collarless, double tapered and highly polished the Avanteon® is based on proven taper-slip principles. Available in 36 (CDH) 38,45 & 50mm offsets allowing accurate restoration of hip joint biomechanics.



ACE®

Multi bearing cementless acetabular system Designed by surgeons, the ACE® aims to provide a one cup solution that can be used with a selection of multi bearing options (BIOLOX® delta, Dual Mobility and Neutral 10° & 20° XLPE CLP75® liners) allowing intra-operative versatility and a proven clinical heritage.



CSF Plus

Cementless acetabular system Precise instrumentation and patented Supravit® Zoned HA coating to maximise bone ingrowth and long-term stability. The CSF Plus is available with either BIOLOX® delta or XLPE CLP75® liners.

Revision Hip Solutions



3D ACT

Acetabular Reconstruction System

Highly porous titanium alloy multi-hole acetabular cup and augment system created using 3D EBM printing technology ideal for both primary and more complex acetabular Paprosky I – IIIb defects. 100% pore connectivity promotes bone ingrowth and secondary biologic fixation. 3D ACT is aligned with intuitive instruments and the ability to fully trial prior to implantation.



ABM

Modular Femoral Revision Stem

Based on the design of the successful Wagner style prosthesis the ABM has 8 longitudinal ridges in the distal stem to aid preservation of the cancellous bone, maintain rotational stability and provide additional strength to the implant itself. Designed to treat a wide range of indications the ABM Femoral Revision system uses precise, accurate instruments and modular components to assist the Surgeon.



SECURUS®

Revision Hip System

Fully H-A.C coated and available in both monobloc and modular distal locking options. All distal stems have an A-P anatomical bow to match the femur and can be paired with proximal bodies in both standard and high offset, anteversion is dialled in to the construct.

Securus® is efficient, precise and accurate in treating a wide range of indications.



Hemiarthroplasty Solutions



Furlong® Cemented Hemiarthroplasty Stem

Available since 1988 and affectionately known as the LOL, our hemiarthroplasty solution has been used in over 50,000 patients in the UK alone. Available in 5 sizes with a precise and streamlined instrument platform.

LOL is an ideal solution for hospital trusts looking for a cost effective, reliable and high-quality UK manufactured implant.



JRI Bipolar Head

Pre-assembled in sizes 40mm – 54mm (1mm increments) and 56mm and 58mm.



Physiological (monopolar) Head

Manufactured from HNSS and in a size range of 39mm to 58mm.

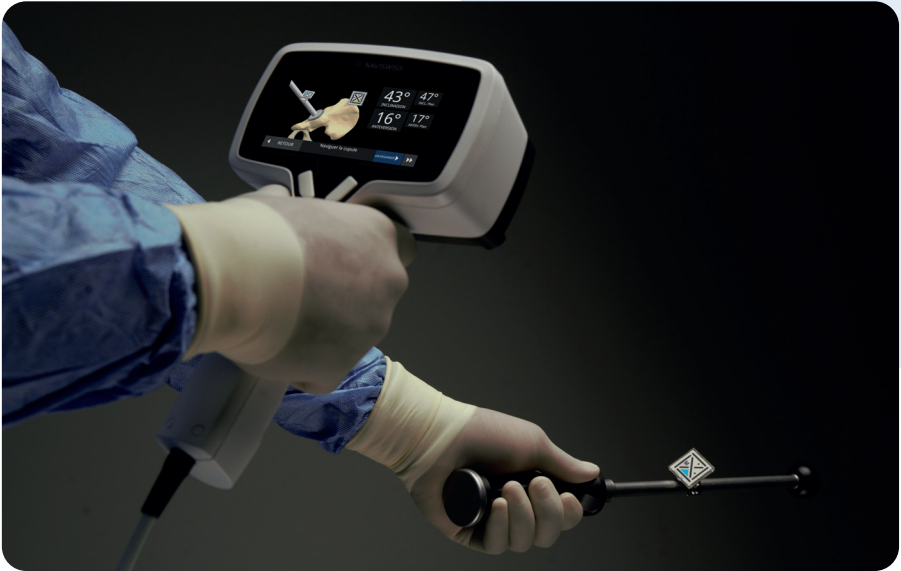


JRI Modular Bipolar

Dual articulation solution to provide improved range of motion. The inner articulation is achieved through a 28mm CoCr head in Short, Medium or Long options to allow improved offset and leg length solutions. Size range of 40mm to 54mm (1mm increments) and 56mm, 58mm and 60mm.



Naviswiss Hip Navigation



Swiss precision hand-held hip navigation system for primary and revision joint replacement. Naviswiss provides the surgeon with control, accuracy with a minimal impact on operating time or budgets.

- Supports all surgical approaches.
- Open platform with all hip implant systems.
- Imageless or CT-based for ultimate versatility
- Streamlined workflow.
- Realtime tracking for cup alignment, leg length and offset.
- Documented outcomes.



JRI Primary Knee Solutions

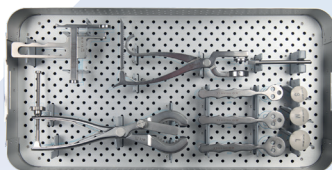
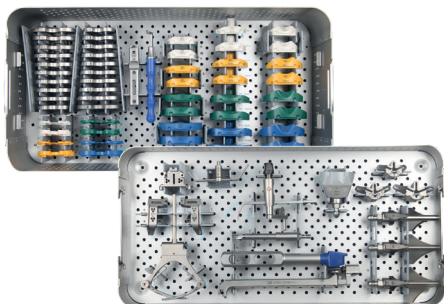
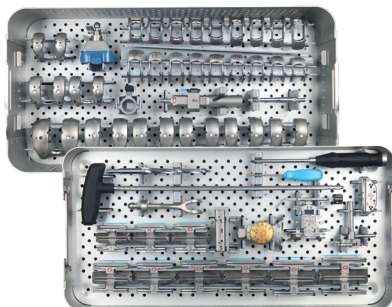
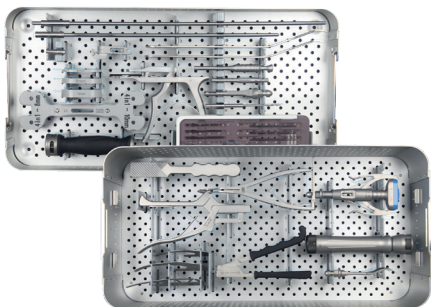
Anatomic • Accurate • Adaptable



A3GT

Our 4th generation A3GT total knee system has been on the market since 2016. It boasts a large range of sizes for best anatomical fit; a soft tissue friendly, high flex femoral component and anatomic polished tibia.

Available in CR, AS and PS.

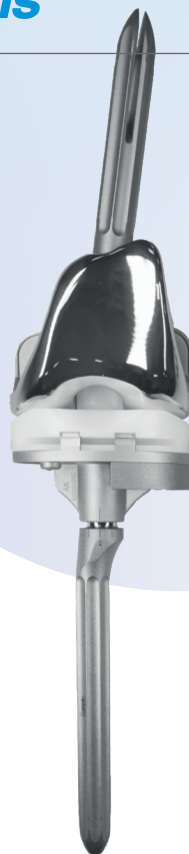


Revision Knee Solutions

ACCK Revision Knee System

A user-friendly revision workhorse designed with compatibility to the A3GT.

It offers extensive modular options, designed to address the common instabilities and bone loss encountered when revising knees.



AHK

Our Rotating Hinge Knee is both high functioning and bone conserving.

Its modularity and intuitive instrument platform make this an excellent option when stability is paramount.

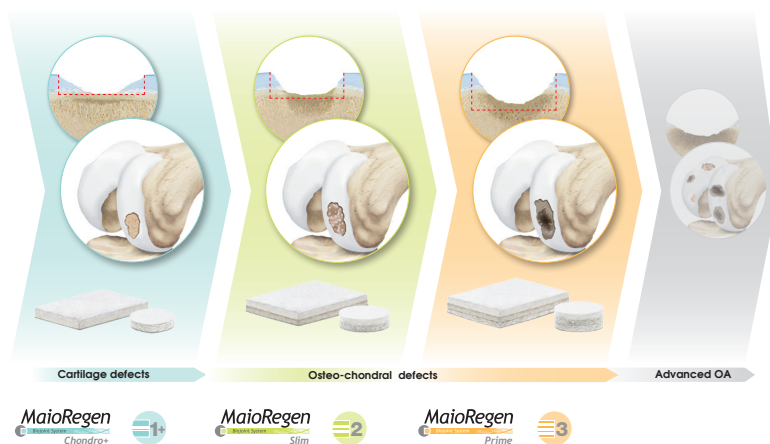


Knee Systems

Orthobiologics

A proven biological solution. Ready when you need it.

Clear clinical indications based on the specific disease stage



MAIOREGEN - Cartilage Regeneration

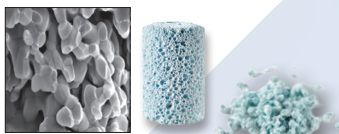
A biomimetic joint surface restoration system for the treatment of cartilage and osteochondral lesions. It is indication for use in all cases where it is necessary to restore osteo-cartilaginous connective tissue in joints.

MaioRegen is a single stage procedure and an off the shelf product, supported by a wealth of clinical evidence.

REGENOSS - Flexible



ENGIPORE - Pre-formed



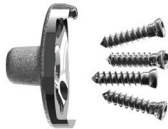
Biomimetic grafts capable of mimicking the composition, structure, morphology and chemico-physical properties of natural bone.

Hydroxyapatite-based and enhanced with either Magnesium or Type 1 Collagen, these grafts create the optimum environment and promote the ingrowth of cells to facilitate the bone regeneration process.



Reverse Total Shoulder Solution

VAIOS



Cortical Bone Screw
±15° Adjustable
Superior/Inferior
Locking Screws



Glenoid Dome
Polished Cobalt
Chrome (CoCr)



Inverse Humeral Insert
Ultra High Molecular
Weight Polyethylene
(UHMWPE)



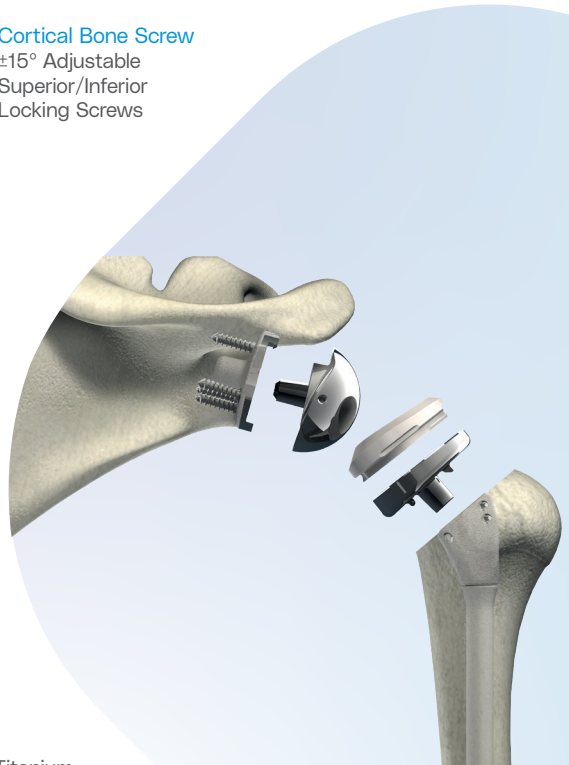
Locking Screw
Humeral Metal Back
Titanium



Humeral Neck
H-A.C. Zoned Coated Titanium
Fixed angle – 140° Neck Stem Angle
(NSA)



Humeral Stem H-A.C.
H-A.C. Supravit® Coated Titanium
8, 10 and 12, 14 and 16mm Diameters



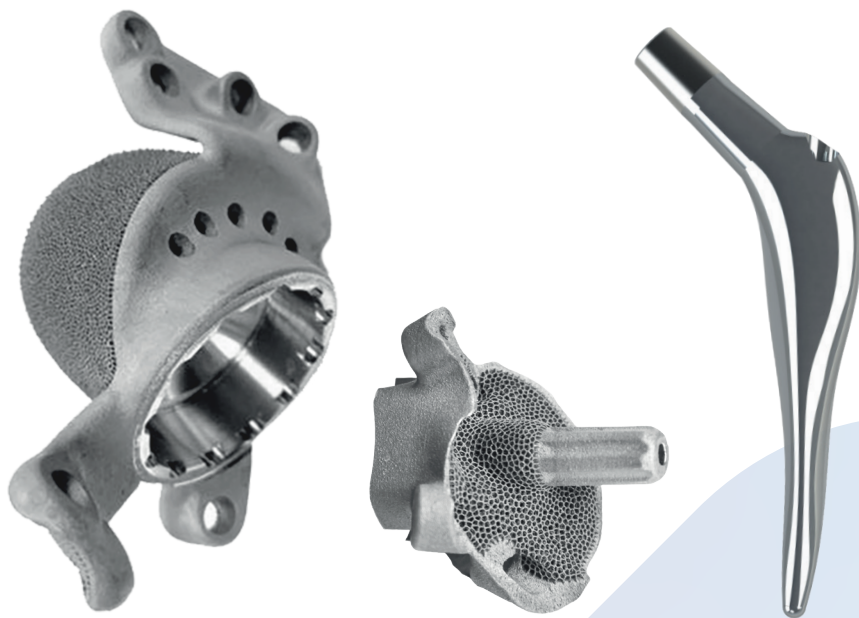
VAIOS

JRI Custom Solutions

Restore Anatomy. Reimagine Movement.

An innovative end to end custom solution for complex orthopaedic pathologies.

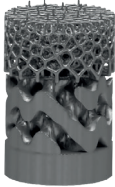
Utilising the latest additive manufacturing and Dual Lattice Technology we aim to improve cleanability, reduce weight and enhance osseointegration of your custom hip and shoulder implants.



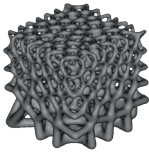
Delivered sterile within 8 weeks from CT.

***Want to know more?
Contact our dedicated Team***

Additive Manufacturing Excellence

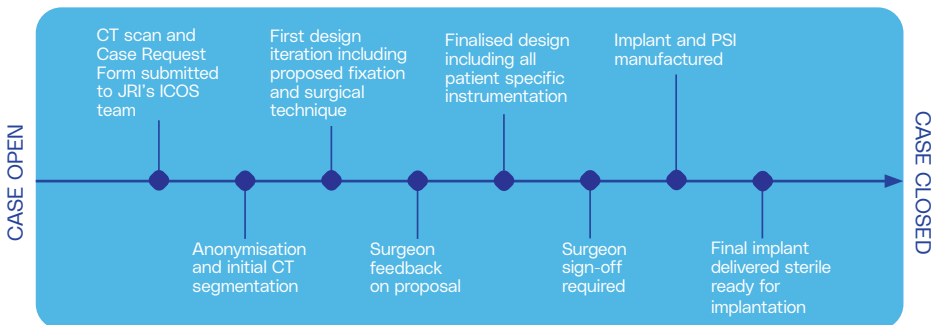


Dual Lattice Technology (DLT) Improves cleanability and mitigates excess powder entrapment. DLT significantly reduces the weight of the construct without weakening structural integrity of the implant.



Stochastic Bone Integration Lattice - The ability to customise the micro-architecture and mechanical properties of the lattice, in order to achieve the greatest contact area with the host bone. Random in nature, the implant's lattice provides maximum conformity to the patient's anatomy. Pores in direct contact measure 500µm to provide optimum integration. Pores further away from the bony anatomy measure 900µm, these increase the likelihood of improved cellular activity and bone ingrowth.

Rapid Design & Delivery Process



ICOS

