

# PALAMIX®

## QUALITY AND FLEXIBILITY IN MIXING

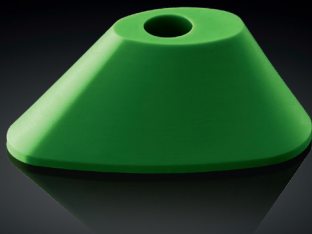


### SPATULA CLIP – NEW TO PALAMIX®

- Applies a thin layer of bone cement for use in TKA
- Adjustable tip clips onto the short nozzle, and can be directed at any angle for optimal cement application

### SHORT NOZZLE – NOW GREEN

- For targeted bone cement application in TKA
- New green colour for increased visibility (the nozzle is still transparent, and the material is unchanged)

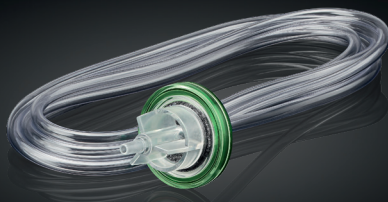


### FEMORAL PRESSURISER – NOW SOFTER

- For bone cement pressurisation in THA
- Softer material allows for better sealing of the femoral canal

### VACUUM HOSE SET – NEW DESIGN

- Simplified design without a vacuum indicator
- Contains an effective, sterile active-charcoal filter for staff safety



Look for the yellow sticker on the optimised PALAMIX® system.

# PALAMIX®

## ADVANTAGES AT A GLANCE

- homogeneous bone cement of reproducibly high quality
- convenient and intuitive handling
- time saving thanks to collection under vacuum
- various application options for flexibility in surgery
- safety for staff and patients



PALAMIX®	Description	Content	REF
PALAMIX® uno	Vacuum mixing system with collection under vacuum for up to two pouches (2x40)	10	66057893
PALAMIX® duo	Vacuum mixing system with collection under vacuum, with two cartridges for up to four pouches (4x40)	10	66057897
PALAMIX® slim nozzle	For use with low-viscosity bone cements; Ø 7 mm	10	66036747
PALAMIX® medium nozzle	Flexible, conical nozzle; Ø 8.7 – 12.6 mm	10	66043960
PALAMIX® cement gun	Reusable cement gun	1	66036163
PALAMIX® vacuum pump	Vacuum pump	1	66036748

Simply order from Heraeus.

[www.heraeus-medical.com](http://www.heraeus-medical.com)

Heraeus Medical GmbH  
Philipp-Reis-Str. 8/13  
61273 Wehrheim  
Germany

10543