



Evolution[®]

MEDIAL-PIVOT KNEE SYSTEM

DESIGN RATIONALE

Introduction

The MicroPort medial-pivot knee system now stands on over 20 years of clinically demonstrated history with its first to market medial-pivot design that was built on the latest kinematic evidence of the natural stability and motion of the knee.^{1,2} Its innovative design aims to restore function by replicating natural motion and AP stability and to address some of the common problems seen with traditional designs, such as anterior knee pain and quadriceps avoidance.

It has been clinically established that patients are more satisfied with the MicroPort medial-pivot design when compared to more traditional knee designs.¹ One of the primary reasons for these dramatic results is the stability provided through the high tibiofemoral conformity in the medial compartment and the natural mobility provided in the lateral compartment. This innovative design has shown 95% patient satisfaction with 98.8% survivorship at 17 years.¹

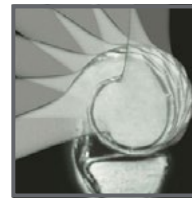
Utilizing the Evolution® medial-pivot knee system's 1:1 conformity (medial ball-in-socket) without constraint (lateral mobility), the quadriceps is not required to activate to prevent the femur from sliding forward on the tibia, as seen with traditional implant

designs. This enhanced quadriceps efficiency minimizes the force acting on the extensor mechanism and allows for faster functional recovery and higher forgotten joint scores.^{2,3,17}

IMAGES OF THE NORMAL KNEE¹⁶



Mobile Lateral
Compartment



Stable Medial
Compartment



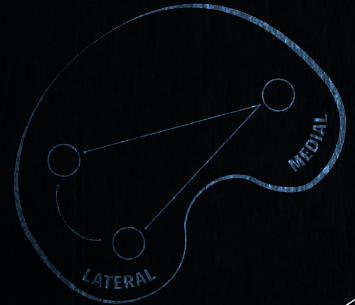
98.8%

Survivorship
at 17 years!

**INNO
VATION
THAT
LASTS**

Linking kinematic theories to implant design

In order to understand the functional outcome differences produced by various implant designs, it is critical to first examine the thought progressions that led to these designs. Many of today's popular designs still adhere to outdated kinematic theories that incorporate less conforming tibiofemoral articulation to produce rollback. However, instead of producing rollback, these designs have been shown to produce instability and limited function.⁵⁻⁷





The Evolution® Knee System
restores function by
replicating the natural AP
stability and medial-pivot
motion of the knee.

Traditional implant designs *and the cause of instability and poor satisfaction*

Following decades of improvement to technique and implant design, approximately 20% of knee replacement patients continue to remain unsatisfied.⁸

Many of today's popular implant designs built with less tibiofemoral conformity can potentially produce

anterior sliding of the femur on the tibia. Much of this dissatisfaction can be explained through functional limitations caused by instability—the underlying cause of limitations such as anterior knee pain and loss of quadriceps performance.

Approximately

25%

of all revisions in TKA are for instability following surgery.⁹⁻¹¹

Consequences of instability

Anterior knee pain

As the femoral component of a traditional implant design slides forward in early flexion, the added force causes the extensor mechanism to attempt to stabilize the knee during activities. ***This force eventually causes pain by tiring the extensor mechanism.***

Loss of quadriceps performance

As the extensor mechanism tires, patients begin using a quadriceps avoidance gait to adapt to the weakening extensor, which can lead to pain.¹²

In order for patients to compensate for the instability and pain, the quadriceps must continually contract in order to prevent the femur from sliding forward. ***Patients ultimately waste much of their quadriceps performance attempting to compensate for this instability.***

Slower functional recovery

Lack of functional stability can hinder ability to get back to daily activities. Patients can feel less comfortable during activities such as moving up or down stairs and getting in and out of chairs.



Sliding forward of the femur on the tibia.



The
Evolution®
medial-pivot knee
replicates the natural
stability and motion
of the knee delivering a
functionally-restorative
design that offers surgeons
an innovative solution to
problems such as instability,
anterior knee pain,
and functional
limitations:⁵⁻⁷

Stability without compromise

Promoted through high medial conformity and constant radius spherical condyles.⁵⁻⁷

Faster functional recovery²

Increased flexion and enhanced quadriceps efficiency achieved through longer constant flexion radius with more posterior, medial dwell point.

Patients who underwent total knee arthroplasty (TKA) with the medial-pivot knee scored significantly better on the Forgotten Joint Score (FJS) than those who underwent a TKA with a modern posterior stabilized (PS) knee, particularly with regard to deep knee flexion and stability of the prosthesis.³

20 year medial-pivot clinical history

- 98.8% survivorship at 17 years and 95% patient satisfaction¹
- Over 600,000+ implanted worldwide²
- Full continuum of care with medial-pivot design across primary & revision

Stability without compromise

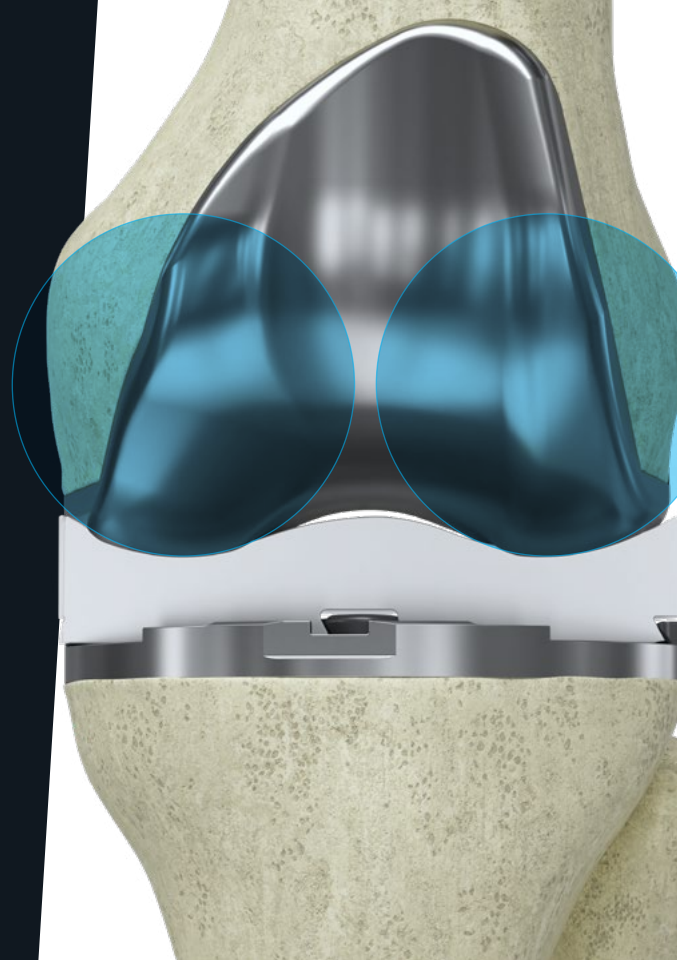
High 1:1 conformity

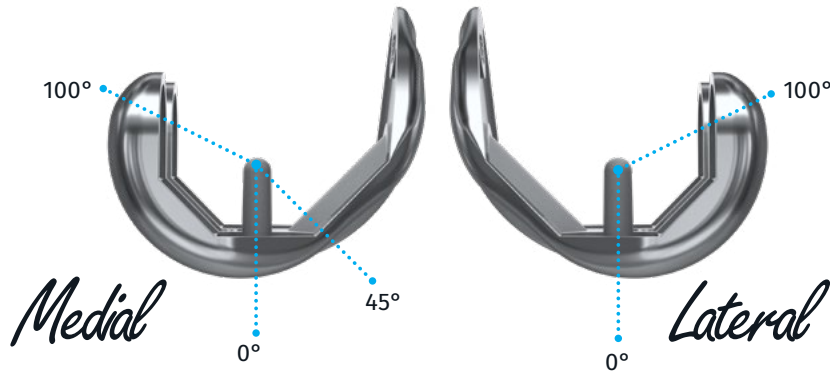
- Medial ball-in-socket articulation.
- Formulated to maximize stability throughout the range of motion and provide high flexion.^{2,13}
- High medial conformity creates the stability provided by the natural bony geometry and soft tissue.

Constant Radius

Constant radius knee replacements can exhibit higher clinical function when compared with multi-radius knee replacements.¹⁴

Through medial ball-in-socket articulation, coupled with lateral mobility, the Medial-Pivot Knee System has been formulated to maximize stability throughout the range of motion.^{2,13}





Innovative knee design with spherical geometry in both sagittal and coronal



Medial compartment of the Evolution® medial-pivot knee flexed at 30°.

Natural medial stability in the Evolution® medial-pivot knee substitutes for the ACL, PCL and bony geometry and allows the quadriceps to perform like normal.¹³ Enhancing quadriceps efficiency may contribute to increased proprioception and more normal feeling following surgery.⁵

Faster, functional recovery²⁸

Natural feeling knee movement

- The high anterior and posterior lips on the Evolution[®] tibial insert substitute for both cruciates.
- AP stability can be improved through implant design by preventing AP motion through conformity of the femoral and tibial components.¹²
- Natural motion and stabilizing structures of the normal knee are replicated in the Evolution[®] knee system.

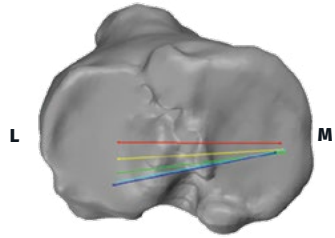
Increased Flexion Potential

- Larger posterior condylar offset and posterior tibial dwell point allow for a more posterior position of the femur on the tibia.
- Posterior femur positioning facilitates deep flexion angles.
- Clinical evidence has shown that the medial-pivot design achieves equal or higher degrees of flexion than traditional posterior stabilized (PS) knee design, with an average of 120^{o3}

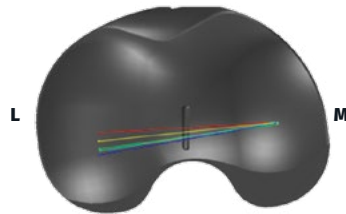
Higher Forgotten Joint Score

- Patients who underwent total knee arthroplasty (TKA) with the medial-pivot knee scored significantly better on the Forgotten Joint Score (FJS) than those who underwent a TKA with a modern PS knee, particularly with regard to deep knee flexion and stability of the prosthesis.³

FIGURE 1



Normal



Evolution® medial-pivot

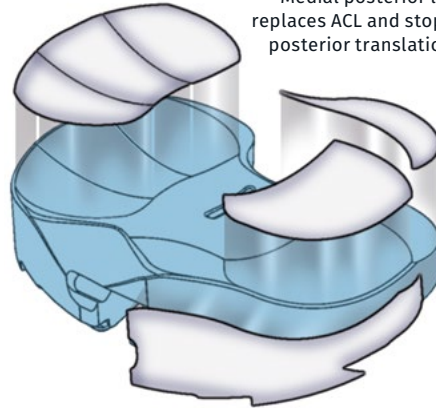
FIGURE 1: Contact points from full extension to full flexion (115°) evaluated for the normal knee and the Evolution® medial-pivot Knee system.

FLEXION ANGLES:

0° 30° 60° 90° 115°

Lateral menisci path allows for 15° of motion

Medial posterior lip replaces ACL and stops posterior translation



Medial anterior lip replaces PCL and stops anterior translation

Medial meniscal "socket" provides stability

A clinical study found patients felt more normal following surgery due to the stability, enhanced quadriceps efficiency, and increased flexion potential.^{2,17}

Patient satisfaction

Patients can feel the difference in stability¹⁸

This bilateral patient preference study sought to examine if patients have higher satisfaction with one prosthesis over another.

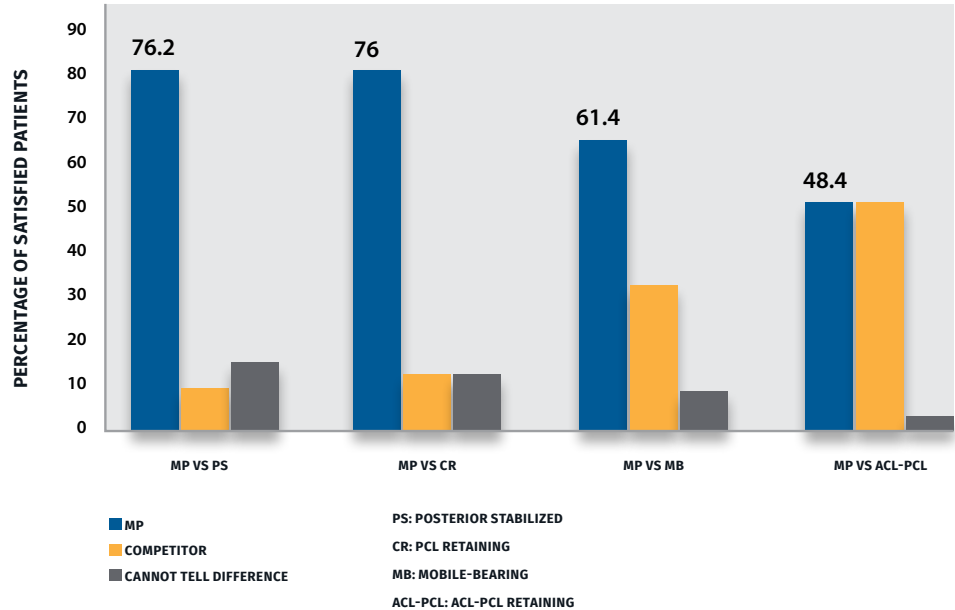
- 440 patients underwent bilateral TKA using a different prosthesis on each side.
- Five knee prostheses were used: ACL-PCL Retaining, Posterior Cruciate-Retaining (CR), Medial-Pivot (MP), Mobile-Bearing (MB) and Posterior-Stabilized (PS).
- The study found patients who underwent bilateral staged TKA were more likely to prefer retention of the ACL and PCL or substitution with the MP Prosthesis.



A long-term clinical outcome of the medial-pivot knee arthroplasty system¹

- 93% experienced very good to excellent pain relief.
- Recovery of function was also very good to excellent with 94% of the patients being able to perform regular activities.
- 78% of them reported that they were able to perform age-appropriate heavy manual work or take part in sport activities, at a mean postoperative period of six months.
- For 95% of the cases, surgery fulfilled patients' expectations at an excellent or a very good level.
- The ROM was improved from 85° to 120° on average.

MEDIAL-PIVOT VS. COMPETITIVE KNEE DESIGNS¹⁸

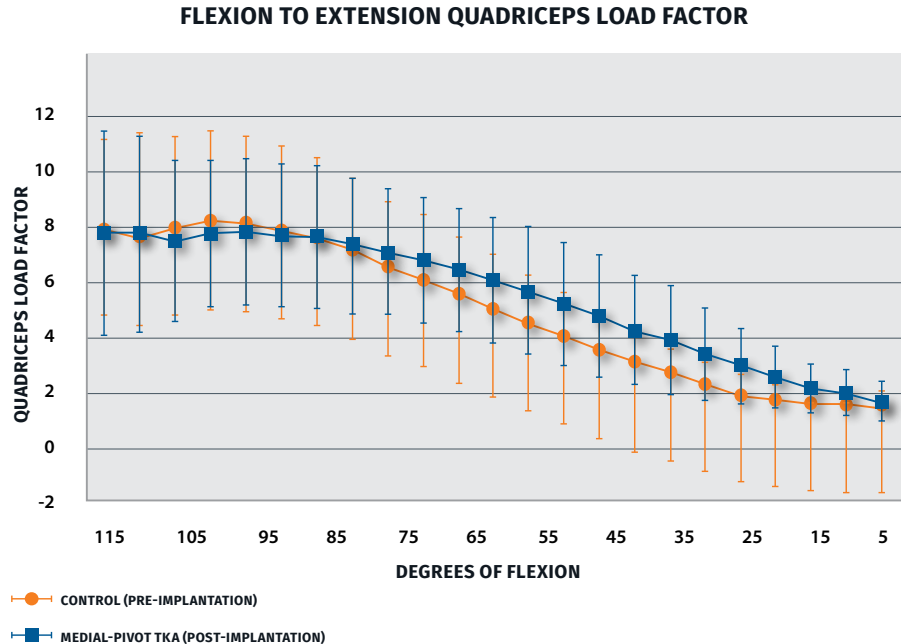


Similar quadriceps efficiency to control group

One in vitro study of quadriceps efficiency following TKA with the Evolution® medial-pivot Knee system demonstrated a similar quadriceps load factor to the pre-implantation control group.¹⁷

This similarity suggests:

- Functional performance is affected by AP stability and can potentially lead to faster rehabilitation.¹⁹
- The combination of the medial spherical radius and conformity of the medial tibial insert provides a constant moment arm on which the extensor mechanism to act.¹⁷

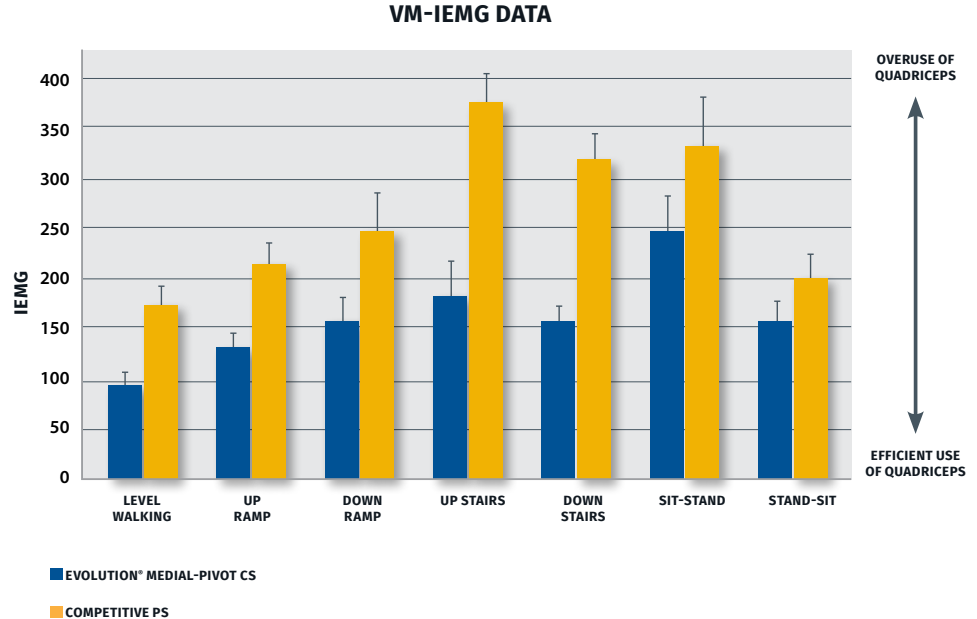


Enhanced quadriceps efficiency following TKA

The graph below demonstrates, through EMG data of the vastus-medialis (VM), the enhanced quadriceps efficiency found in patients with an Evolution® medial-pivot CS Knee over that of patients with a traditional PS Knee.⁵

Patients with improved quadriceps efficiency and AP stability may experience:

- More normal feeling.
- Improved patellofemoral mechanics.
- Superior single-leg weight-bearing flexion performance.¹⁸



Wear limiting design

Minimized contact stresses

- High contact throughout the range of motion (ROM) to minimize contact stresses.²
- In vitro wear assessment data demonstrates that implant design may be more important than bearing materials. **FIGURE 2**

*WEAR DATA RETRIEVED FROM LITERATURE SOURCES.^{20,21}
WEAR TESTING WAS NOT PERFORMED BY MICROPORT ORTHOPEDICS.

FIGURE 2 | WEAR RATES FOR EVOLUTION[®], ADVANCE[®] AND TWO ZIMMER SYSTEMS

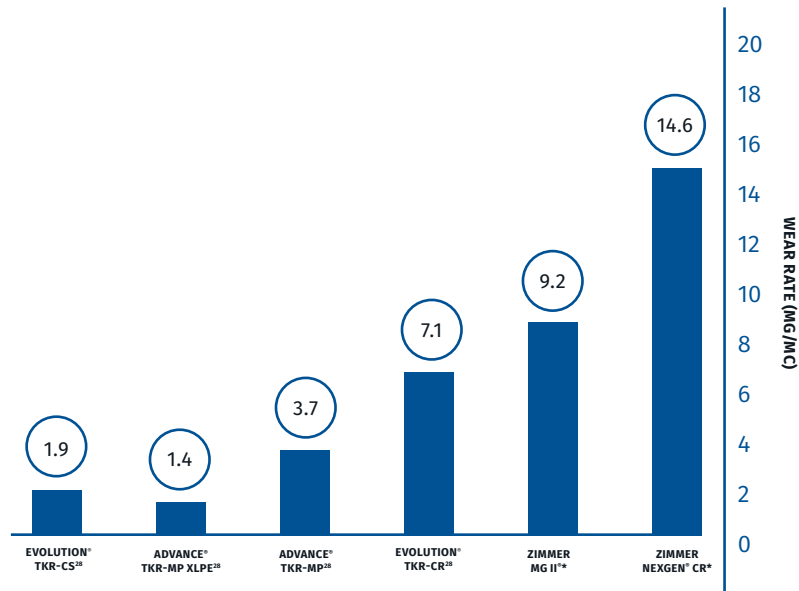
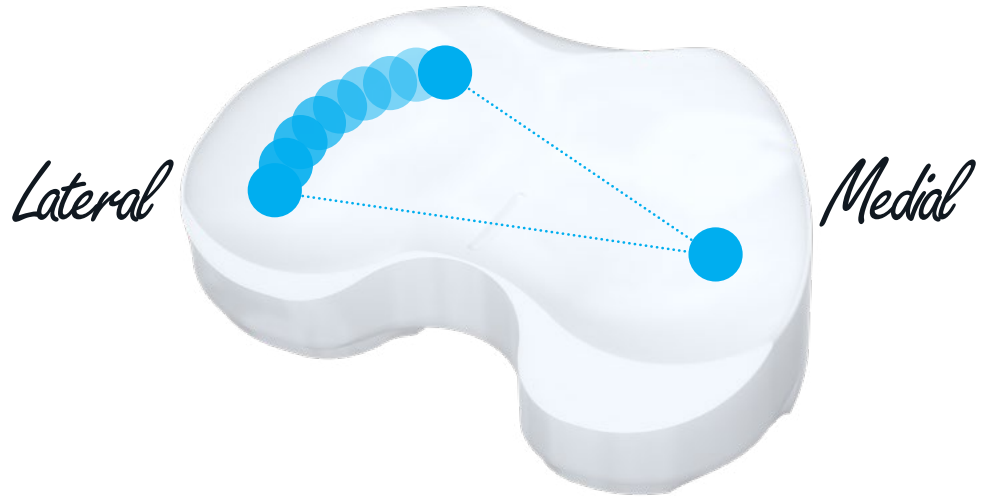


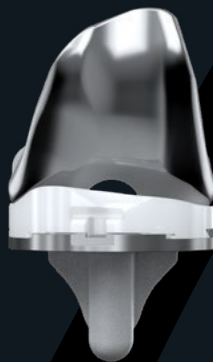
FIGURE 2

Evolution® medial-pivot Knee system exhibits a repeatable motion.

- Replicates the kinematics of the natural knee.
- Resists multi-directional motion often occurring in traditional knee replacements, which some studies have linked to increased wear.^{6,22-24}



Fueled by innovation
primary through revision



EVOLUTION®

The next Evolution® of the
Advance® medial-pivot knee



BIOFOAM®

Tibia and porous femur for
cementless fixation



NITRX™

TiNbn-coated knee



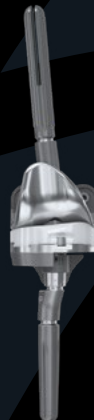
PRIMARY STEMMED CS

Boxless stemmed
primary femur



REVISION TIBIA

Medial-pivot revision Tibia



REVISION CCK®

CCK femur and revision tibia



REVISION STEMMED CS

Boxless stemmed revision
femur and tibia

References:

1. Study conducted with the ADVANCE® Medial-Pivot Knee System. Macheras GA et al A long term clinical outcome of the Medial Pivot Knee Arthroplasty System. *Knee*. 2017 Mar;24(2):447-453.
2. MPO data on file. Individual results and activity levels after surgery vary and depend on many factors including age, weight and prior activity level.
3. Samy DA et al A Retrospective Comparison of a Medial-Pivot and Posterior-Stabilized Total Knee Arthroplasty With Respect to Patient-Reported and Radiographic Outcomes. *The Journal of Arthroplasty* 2017 Dec 7.
4. Freeman MA, Pinskerova V. The movement of the knee studied by magnetic resonance imaging. *Clin Orthop Relat Res*. 2003;410:35-43
5. LaMontagne M, et al. Quadriceps and Hamstring Muscle Activation and Function Following Medial Pivot and Posterior Stabilized TKA: Pilot Study
6. Schmidt R. Fluoroscopic analyses of cruciate-retaining and medial-pivot knee implants. *Clin Orthop Relat Res*. 2003;410:139-147.
7. Dennis DA, Komistek RD, Mahfouz MR, Haas BD, Stiehl JB. Multicenter determination of in vivo kinematics after total knee arthroplasty. *Clin Orthop Relat Res*. 2003
8. Bourne RB. Patient Satisfaction after Total Knee Arthroplasty: Who is Satisfied and Who is Not? *Clin Orthop Relat Res*. 2010 Jan; 468(1): 57-63.
9. Yercan HS et al. Tibiofemoral instability in primary total knee replacement: a review, Part 1: basic principles and classification. *Knee*. 2005; 12:257-66.
10. Callaghan JJ, O'Rourke MR, Saleh KJ. Why knees fail: lessons learned. *J Arthroplasty*. 2004;19(4 Suppl 1): 31-4.
11. Fehring TK, Valadie AL. Knee instability after total knee arthroplasty. *Clin Orthop Relat Res*. 1994; 299:157-62
12. Blaha JD. AP instability: a cause of anterior knee pain. *JBJS* 2014.
13. Blaha J. The rationale for a total knee implant that confers anteroposterior stability throughout range of motion. *The Journal of Arthroplasty* Vol. 19 No. 4 Suppl. 1 2004
14. Ezechieli M. The influence of a single-radius design on the knee stability. *Technol Health Care*; 2012, 20(6):527-34.
15. Van Overschelde P, Parker A Preliminary Short-term Outcome of first 300 consecutive cases of second generation Medial-Pivot Total Knee replacement System EKS Arthroplasty Conference - eposter - London - April 20-21, 2017
16. Freeman MA, Pinskerova V. The movement of the knee studied by magnetic resonance imaging. *Clin Orthop Relat Res*. 2003;410:35-43
17. DeBoer DK, Blaha JD, Barnes CL, Fitch D, Obert R, Carroll M. Quadriceps Efficiency Following Total Knee Arthroplasty with a Medial-Pivot System is Similar to Control. 2015 ISTA Congress. Vienna, Austria.
18. Pritchett JW. Patients prefer a bicruciate-retaining or the medial pivot total knee prosthesis. *J Arthroplasty*. 2011 Feb;26(2):224-8.
19. Ryan J, Reynolds, Peter S, Walker, John Buza. Mechanisms of anterior-posterior stability of the knee joint under load-bearing. *Journal of Biomechanics* 57 (2017) 39-45
20. Haider H. Comparison between force-controlled and displacement controlled in-vitro wear testing on a widely used TKR implant. *ORS Poster*. 2002;27:1007.
21. Schwenke T. Differences in wear between load and displacement control tested total knee replacements. *Wear*. 2009;267:757-62.
22. Wang A. Mechanistic and morphological origins of UHMWPE wear debris in total joint replacement prostheses. *Proc Inst Mech Eng*. 1996;210(3):141-55.
23. Sathasivam S, Walker PS. Optimization of the Bearing Surface Geometry of Total Knees. *J Biomechanics*. 1994;27(3):255-64.
24. Scuderi GR, Komistek RD, Dennis DA, Insall JN. The Impact of Femoral Component Roational Alignment on Condylar Lift-Off. *Clin Orthop Relat Res*. 2003;410:148-54.



Full Function, Faster[®]



MicroPort Orthopedics Inc.
5677 Airline Road
Arlington, TN USA 38002
866 872 0211

microportortho.com

The CE-Marking of Conformity is applied per catalog number and appears on the outer package label, if applicable.

Trademarks and Registered marks of
MicroPort Orthopedics Inc.
© 2020 MicroPort Orthopedics Inc.
All Rights Reserved. 011426C APR2020