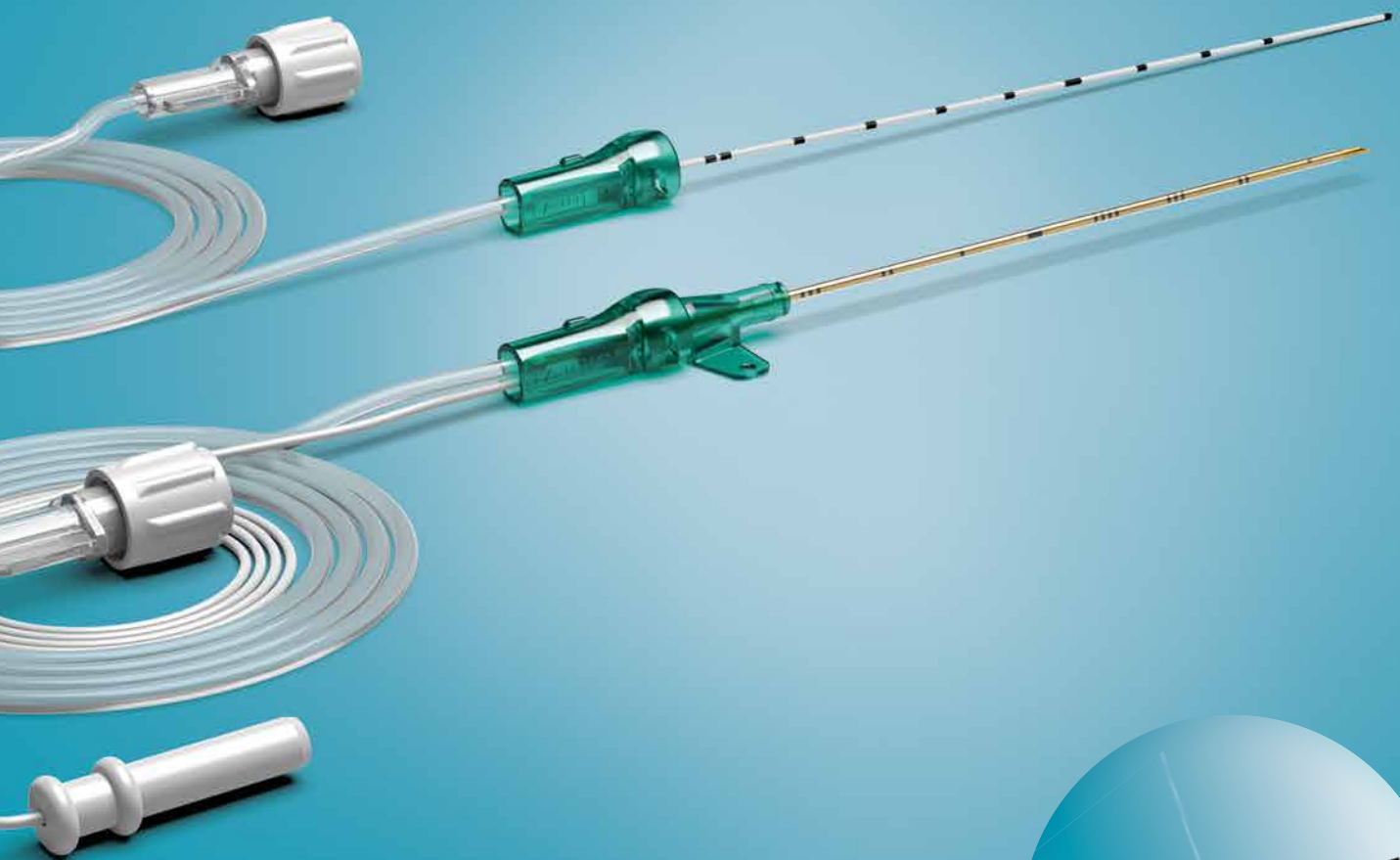


E-Cath[®] II / E-Cath[®] II Plus

Continuous Nerve Blocks as Simple
as a Single Shot Technique



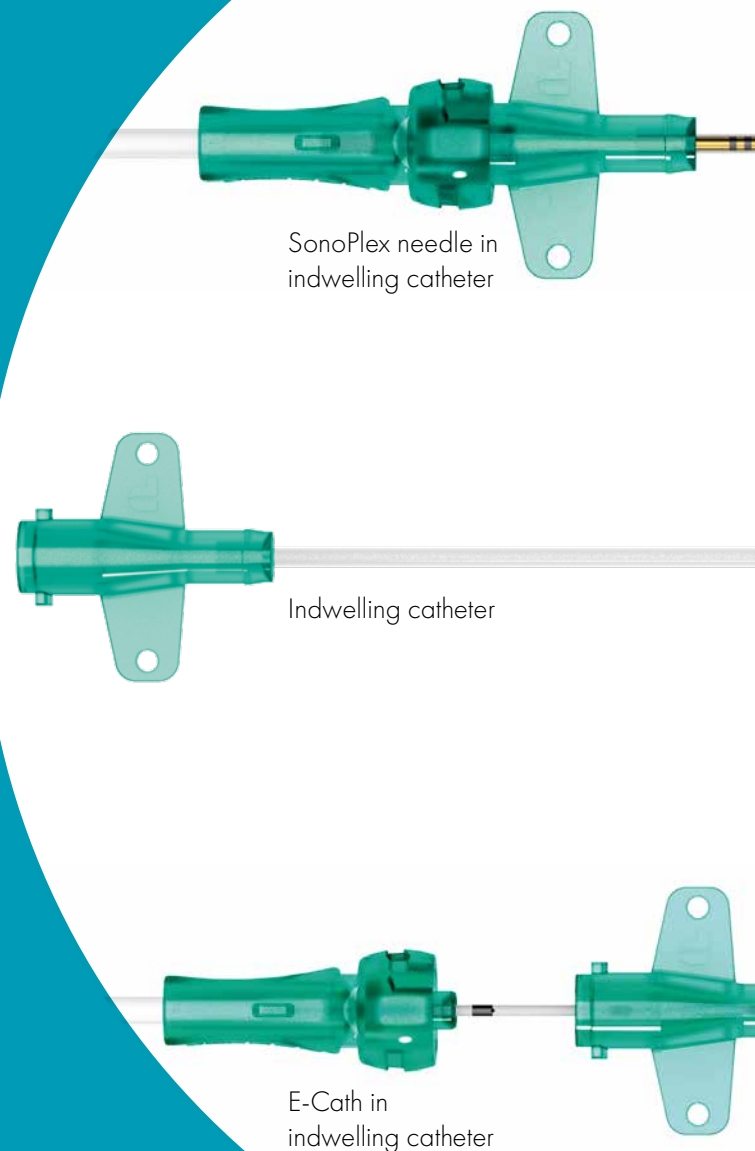
E-Cath System

Quite Simple: Catheter Over Needle (CON) Technique in Three Steps

The E-Cath®/E-Cath® Plus system was developed in collaboration with Dr Ban Tsui.

It makes the CON Technique as simple as a Single Shot Technique. The CON Technique can offer increased added value, especially for the training of young anesthetists and for hospitals that do not work with continuous nerve blocks on a daily basis.

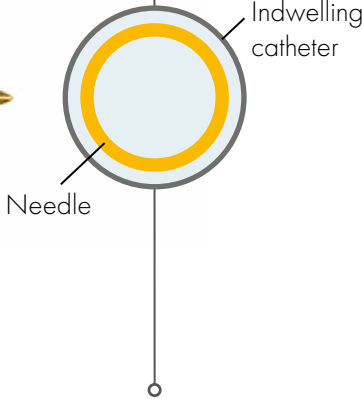
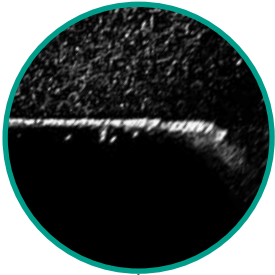
The new E-Cath II/E-Cath II Plus combines the best of clinical experience and the latest technical expertise.



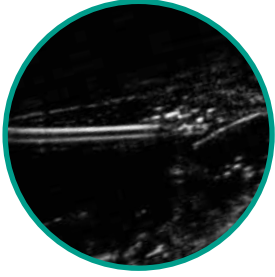
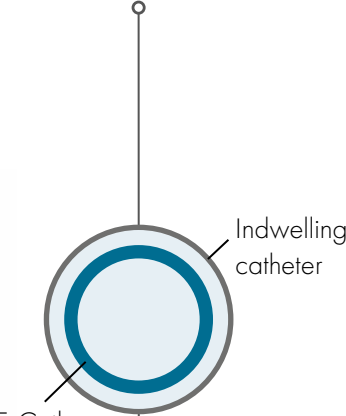
1. Ip V. H. Y. et al. (2021). How I Do It: Technical report on surgically-initiated rectus sheath catheter using catheter-over-needle assembly. *The Canadian Journal of Urology*, 28 (5): 10871–10873.

2. Ip V. H. Y. et al. (2013). The catheter-over-needle assembly offers greater stability and less leakage compared to the traditional counterpart in continuous interscalene nerve blocks: a randomized, patient-blinded study. *Can. J. Anesth.*, 60: 1272–1273.

Self Priming System



» Improved ultrasound visibility of the needle shaft, needle tip, indwelling catheter and E-Cath.

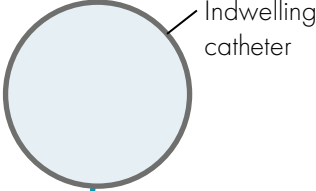


1. Placing the indwelling catheter using the SonoPlex needle



2. Removing the needle

- » The indwelling catheter seals the puncture site.
- » Tissue tension is maintained.
- » The risk of leakage¹ and dislocation² is reduced.



3. Placing the E-Cath using an indwelling catheter



- » The dual catheters increase kink stability.

Puncture and Catheter Placement

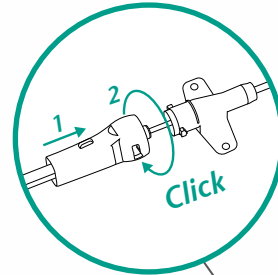
As Simple as a Single Shot

Secure Attachment

Integrated Injection Tube

It is permanently secured on the E-Cath® and needle hub:

- » Injection takes place directly and safely via the injection tube, no additional handling required.
- » Reduces the risk of leakage.

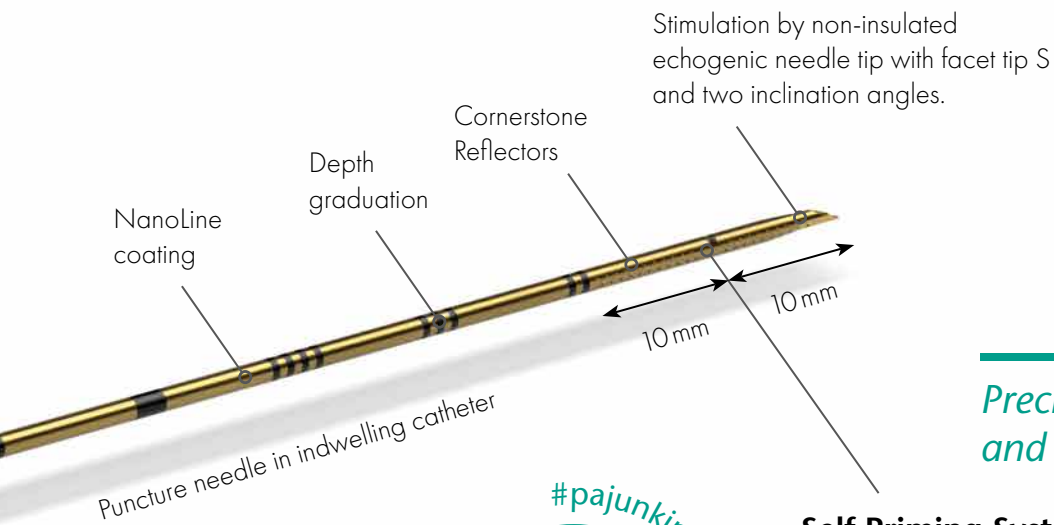


Integrated stimulation cable

Bayonet Lock

Ensures a secure connection between the indwelling catheter and the puncture needle and E-Cath:

- » The puncture needle is ready for use as it is already preassembled in the set.
- » Engagement can be verified by audible and tactile "click" feedback.
- » It enables one-handed and ergonomic use of the E-Cath.

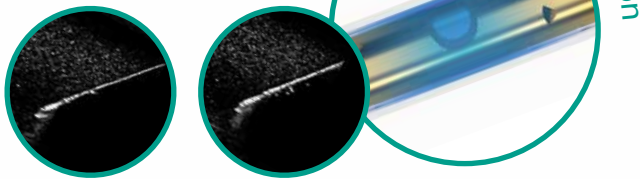


Precise Puncture and Position Control

Self Priming System

Anesthetic flows through the distal opening between the two Cornerstone segments and forms a fluid layer between the outer wall of the needle and the indwelling catheter:

- » Echogenic properties of the needle shaft are enhanced.



Before **During**

Puncture needle and indwelling catheter before and during injection.

Comparison test in Blue Phantom, insertion angle 45°



Reduced Risk of Leakage and Dislocation

Sealed Puncture Site

The puncture site is sealed by the indwelling catheter as it has a larger outer diameter than the puncture needle:

- » After removal of the puncture needle, the tension in the tissue is maintained.
- » The risk of leakage¹ and dislocation² is reduced.

Two Catheter Layers

Together with the indwelling catheter, the E-Cath forms a stable and safe double lumen:

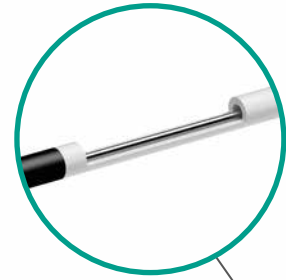
- » This significantly supports the kink stability of the E-Cath.
- » Contributes to a uniform flow of the anesthetic.

1. Ip V. H. Y. et al. (2021). How I Do It: Technical report on surgically-initiated rectus sheath catheter using catheter-over-needle assembly. *The Canadian Journal of Urology*, 28 (5): 10871 – 10873.

2. Ip V. H. Y. et al. (2013). The catheter-over-needle assembly offers greater stability and less leakage compared to the traditional counterpart in continuous interscalene nerve blocks: a randomized, patient-blinded study. *Can. J. Anesth.*, 60: 1272 – 1273.

E-Cath® II / E-Cath® II Plus with Indwelling Catheter

A Double Lumen That Has What It Takes



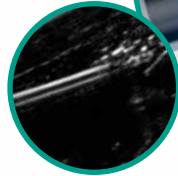
Integrated Stainless Steel Reinforcement

At the proximal end, the E-Cath II Plus is provided with an integrated steel wire reinforcement:

- » It is designed to facilitate placement of the E-Cath.

Intelligent Catheter Design

#pajunkinnovation

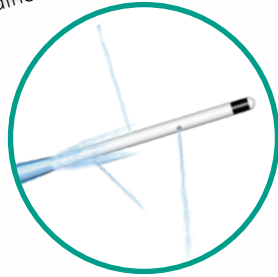


Self Priming System

As a result of the proximal opening, anesthetic also flows between the outer wall of the E-Cath and the inner wall of the indwelling catheter during injection:

- » This minimizes artifacts and improves ultrasound visibility.

E-Cath Plus with steel wire reinforcement protrudes 15 mm from the indwelling catheter.

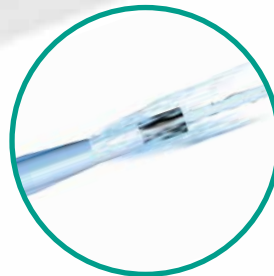
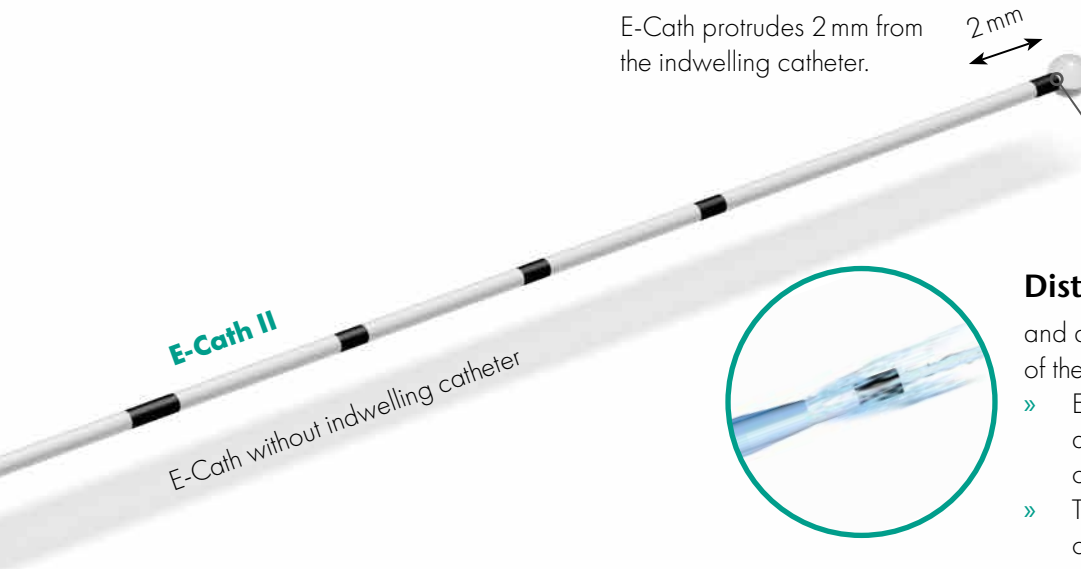


Closed Tip, Three Lateral Openings

and an additional outlet at the end of the indwelling catheter:

- » This optimizes the 360° distribution of the anesthetic.

E-Cath protrudes 2 mm from the indwelling catheter.



Distal Opening

and an additional outlet at the end of the indwelling catheter:

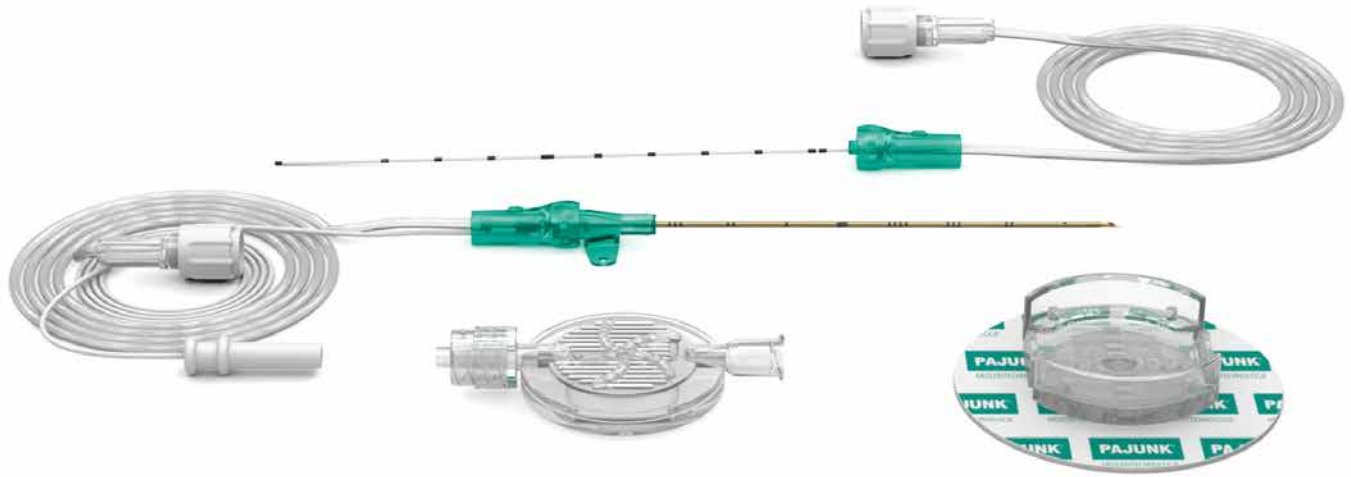
- » Enables continuous flow of the anesthetic, even if the distal opening is blocked.
- » This improves 360° distribution of the anesthetic.

» Simplifies block extension, reduces the risk of dislocation:

- The E-Cath is firmly connected to the indwelling catheter and therefore cannot migrate.
- Position control is possible at any time by ultrasound.
- Thanks to its extended tip and the three lateral openings, the E-Cath II Plus can compensate for minor tissue movements.



Also available in **NRFit**



E-Cath® II & E-Cath® II Plus

E-Cath II

Needle with Cornerstone Reflectors (20G) with facet tip S, indwelling catheter (18G) and E-Cath (20G)

Indwelling catheter	Working length: Indwelling catheter + E-Cath II	Item no.	NRFit® item no.	PU	FixoLong + filter	FixoCath
18G x 50 mm (2")	52 mm	301185-40E	301165-40E	10	•	
18G x 50 mm (2")	52 mm	301285-40E	301265-40E	10		•
18G x 80 mm (3 1/5")	82 mm	311185-40E	311165-40E	10	•	
18G x 80 mm (3 1/5")	82 mm	311285-40E	311265-40E	10		•
18G x 100 mm (4")	102 mm	361185-40E		10	•	
18G x 100 mm (4")	102 mm	361285-40E		10		•
18G x 130 mm (5 1/5")	132 mm	351185-40E		10	•	
18G x 130 mm (5 1/5")	132 mm	351285-40E		10		•
18G x 150 mm (6")	152 mm	371285-40E		10		•

E-Cath II Plus

Needle with Cornerstone Reflectors (20G) with facet tip S, indwelling catheter (18G) and E-Cath (20G) with stainless steel reinforcement starting at the proximal end, protruding 15 mm from indwelling catheter

Indwelling catheter	Working length: Indwelling catheter + E-Cath II Plus	Item no.	NRFit item no.	PU	FixoLong + filter	FixoCath
18G x 50 mm (2")	65 mm	301185-41E	301165-41E	10	•	
18G x 50 mm (2")	65 mm	301285-41E		10		•
18G x 80 mm (3 1/5")	95 mm	311185-41E	311165-41E	10	•	
18G x 80 mm (3 1/5")	95 mm	311285-41E		10		•
18G x 100 mm (4")	115 mm	361285-41E		10		•



More information on
E-Cath II & E-Cath II Plus

Further PAJUNK® products from our portfolio for peripheral nerve blocks can be found in the brochures **SonoLong SoftSecure** and **PNB Catheter Sets** or on our website.

Not all devices are registered and approved for sale in all countries or regions. Even the instructions for use may differ depending on the country or region. Please contact our representative in your country to get information on the availability of the devices.

PAJUNK® GmbH Medizintechnologie
International Sales
Karl-Hall-Strasse 1
78187 Geisingen, Germany
Tel.: +49 7704 9291-0
Fax: +49 7704 9291-600
info@pajunk.com
pajunk.com

PAJUNK® Medical Produkte GmbH
Central Europe
Pajunkstraße 2
78187 Geisingen, Germany
Tel.: +49 7704 8008-0
Fax: +49 7704 8008-150
info@pajunk-medipro.com
pajunk.de & pajunk.eu

PAJUNK® Swiss AG
Switzerland
Neuhofstrasse 5A
6340 Baar, Switzerland
Tel.: +41 417 609 627
info@pajunk.ch
pajunk.ch

PAJUNK® Medical System L.P.
United States of America
4575 Marconi Drive
Alpharetta, GA 30005, USA
Tel.: +1 888 972 5865
Fax: +1 678 514 3388
info@pajunk-usa.com
pajunkusa.com

PAJUNK® UK Medical Products Ltd
United Kingdom
Unit D1 The Waterfront
Goldcrest Way, Newburn Riverside
Newcastle upon Tyne, NE15 8 NY, UK
Tel.: +44 191 264 7333
info@pajunk.co.uk
pajunk.co.uk